

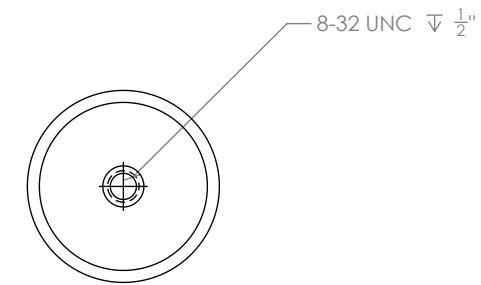
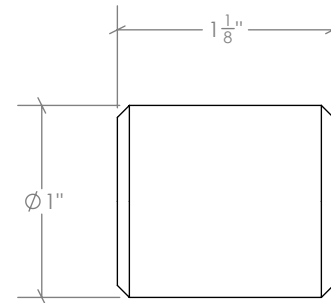
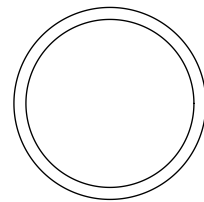
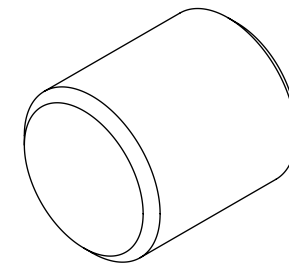
DOCUMENT:	PRODUCT SPECIFICATIONS	DOOR APPLICATION:	SINGLE & BI-PARTING	DRAWING SCALE:	1'-0" = 1'-0" (1:1)	KROWNLAB 2351 NW York St. Portland, OR 97210 +1 503 292 6998 www.krownlab.com support@krownlab.com
SYSTEM:	KOR DOOR KNOB	PANEL THICKNESS:	SEE TABLE BELOW	UNITS:	INCHES	
MOUNTING STYLE:	WOOD AND GLASS	MAXIMUM WEIGHT:	N/A	DATE:	1/12/2024	




DOOR PANEL THICKNESS RANGE

WOOD	GLASS*
1-1/4" & UP	3/8" TO 1/2"

* = CONTACT US FOR PANELS OUTSIDE OF THIS RANGE



* = SEE GLASS SPECIFICATIONS PAGE FOR MORE INFORMATION.

DOCUMENT:	PRODUCT SPECIFICATIONS	DOOR APPLICATION:	SINGLE & BI-PARTING	DRAWING SCALE:	1'-0" = 1'-0" (1:1)	KROWNLAB 2351 NW York St. Portland, OR 97210 +1 503 292 6998 www.krownlab.com support@krownlab.com	
SYSTEM:	KOR DOOR KNOB	PANEL THICKNESS:	1-1/4" AND UP	UNITS:	INCHES		
MOUNTING STYLE:	WOOD - SINGLE AND DOUBLE-SIDED	MAXIMUM WEIGHT:	N/A	DATE:	1/12/2024		

