

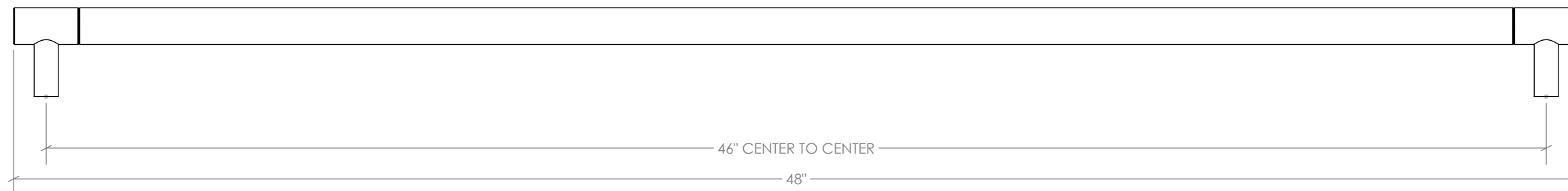
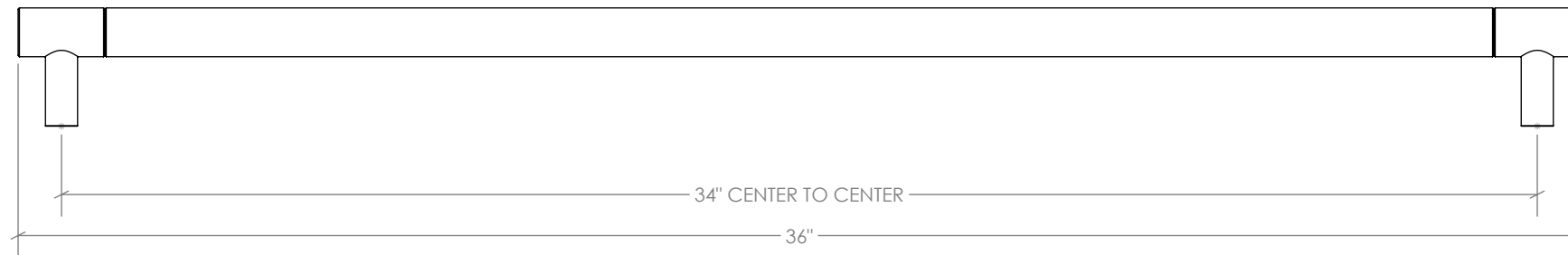
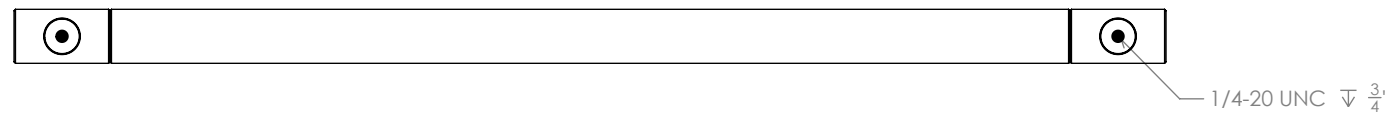
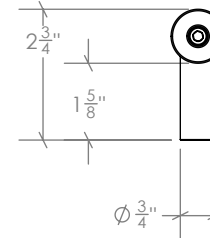
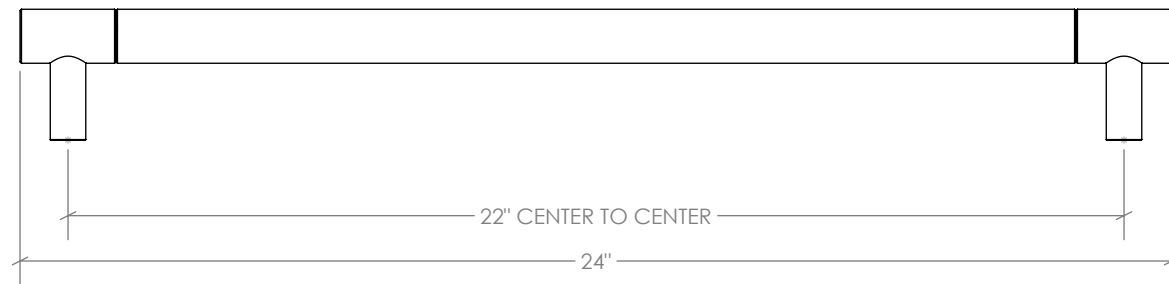
DOCUMENT: PRODUCT SPECIFICATIONS	DOOR APPLICATION: SINGLE & BI-PARTING	DRAWING SCALE: 3" = 1'-0" (1:4)	KROWNLAB 2351 NW York St. Portland, OR 97210 +1 503 292 6998 www.krownlab.com support@krownlab.com
SYSTEM: KOR DOOR PULL	PANEL THICKNESS: SEE TABLE BELOW	UNITS: INCHES	
MOUNTING STYLE: WOOD AND GLASS	MAXIMUM WEIGHT: N/A	DATE: 1/12/2024	




DOOR PANEL THICKNESS RANGE

WOOD	GLASS*
1-1/4" & UP	3/8" TO 1/2"

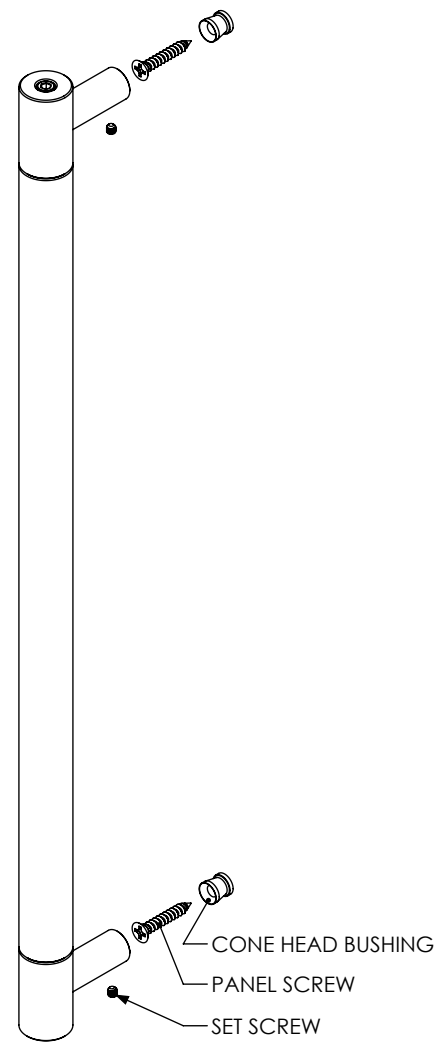
* = CONTACT US FOR PANELS OUTSIDE OF THIS RANGE



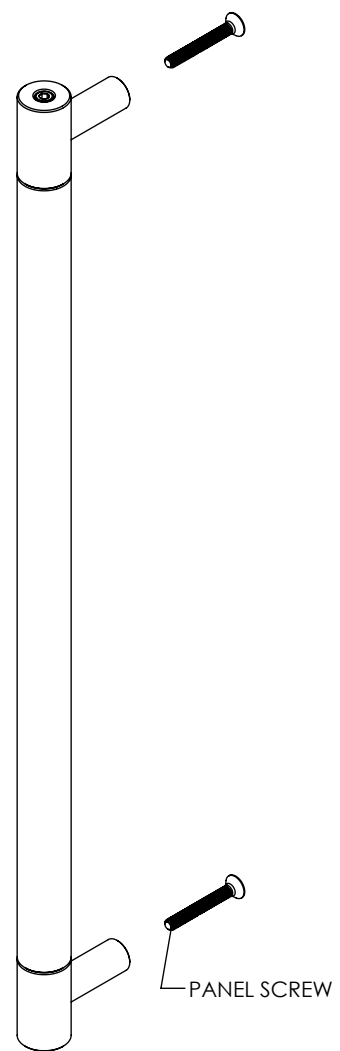
* = SEE GLASS SPECIFICATIONS PAGE FOR MORE INFORMATION.

DOCUMENT:	PRODUCT SPECIFICATIONS	DOOR APPLICATION:	SINGLE & BI-PARTING	DRAWING SCALE:	3" = 1'-0" (1:4)	KROWNLAB 2351 NW York St. Portland, OR 97210 +1 503 292 6998 www.krownlab.com support@krownlab.com	
SYSTEM:	KOR DOOR PULL	PANEL THICKNESS:	PRODUCT CONFIGURATION DEPENDENT	UNITS:	INCHES		
MOUNTING STYLE:	WOOD	MAXIMUM WEIGHT:	N/A	DATE:	1/12/2024		

SINGLE SIDED WOOD - BLIND



SINGLE SIDED WOOD - THROUGH



DOUBLE SIDED WOOD

