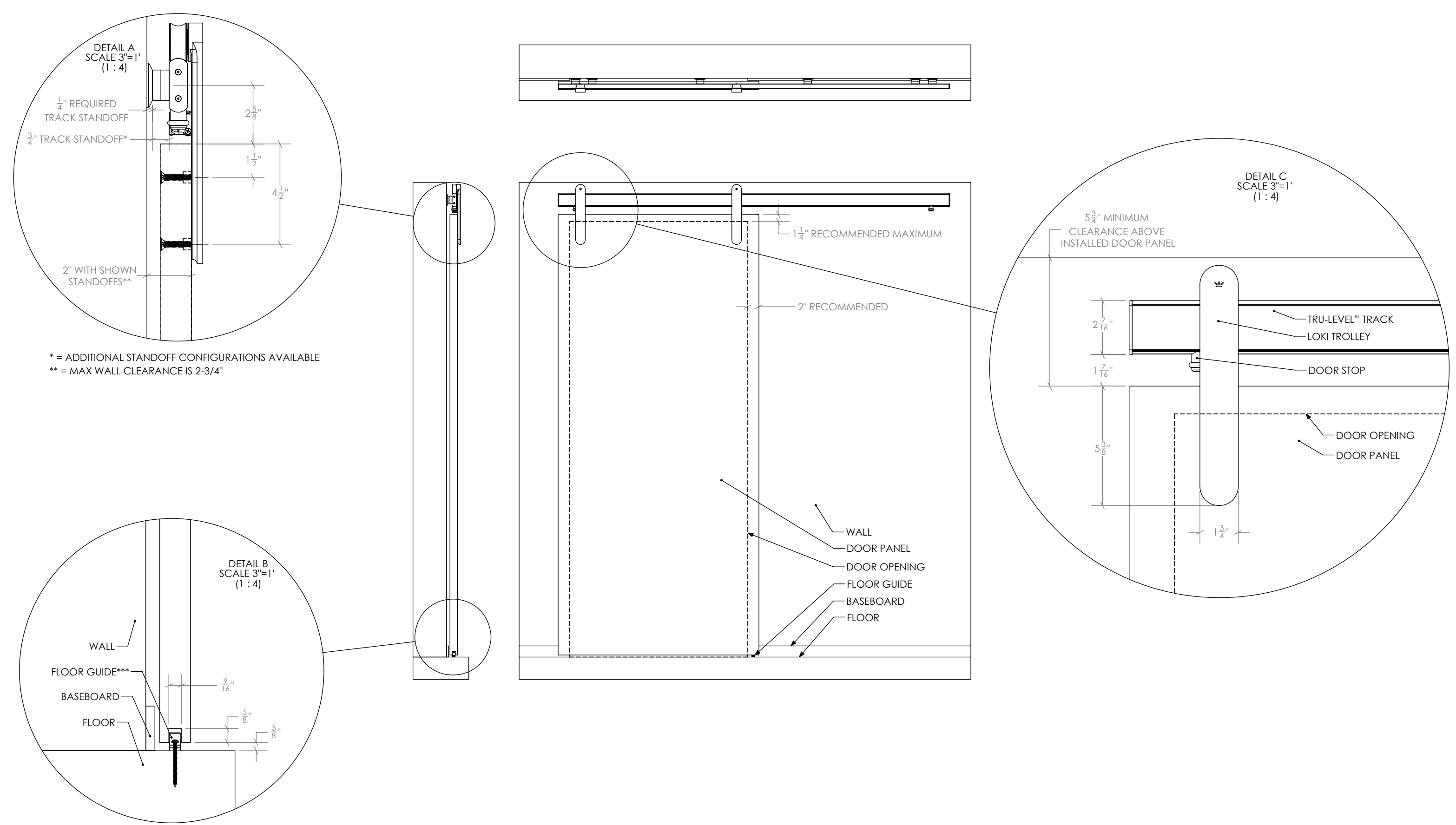


DOCUMENT:	PRODUCT SPECIFICATIONS	DOOR APPLICATION:	SINGLE & BI-PARTING	DRAWING SCALE:	3/4" = 1'-0" (1:16)	<div>KROWNLAB</div> <div>2351 NW York St.</div> <div>Portland, OR 97210</div> <div>+1 503 292 6998</div> <div>www.krownlab.com</div> <div>support@krownlab.com</div> <div><div><div></div></div><div>KROWNLAB</div><div>PDR · ORE</div></div>
SYSTEM:	LOKI	PANEL THICKNESS:	1-1/4" TO 1-3/4" (UP TO 2-3/8" WITHOUT DOOR TRIM)	UNITS:	INCHES	
MOUNTING STYLE:	FACE MOUNT	MAXIMUM WEIGHT:	UP TO 200LBS (CONTACT US FOR HEAVIER PANELS)	DATE:	3/6/2024	

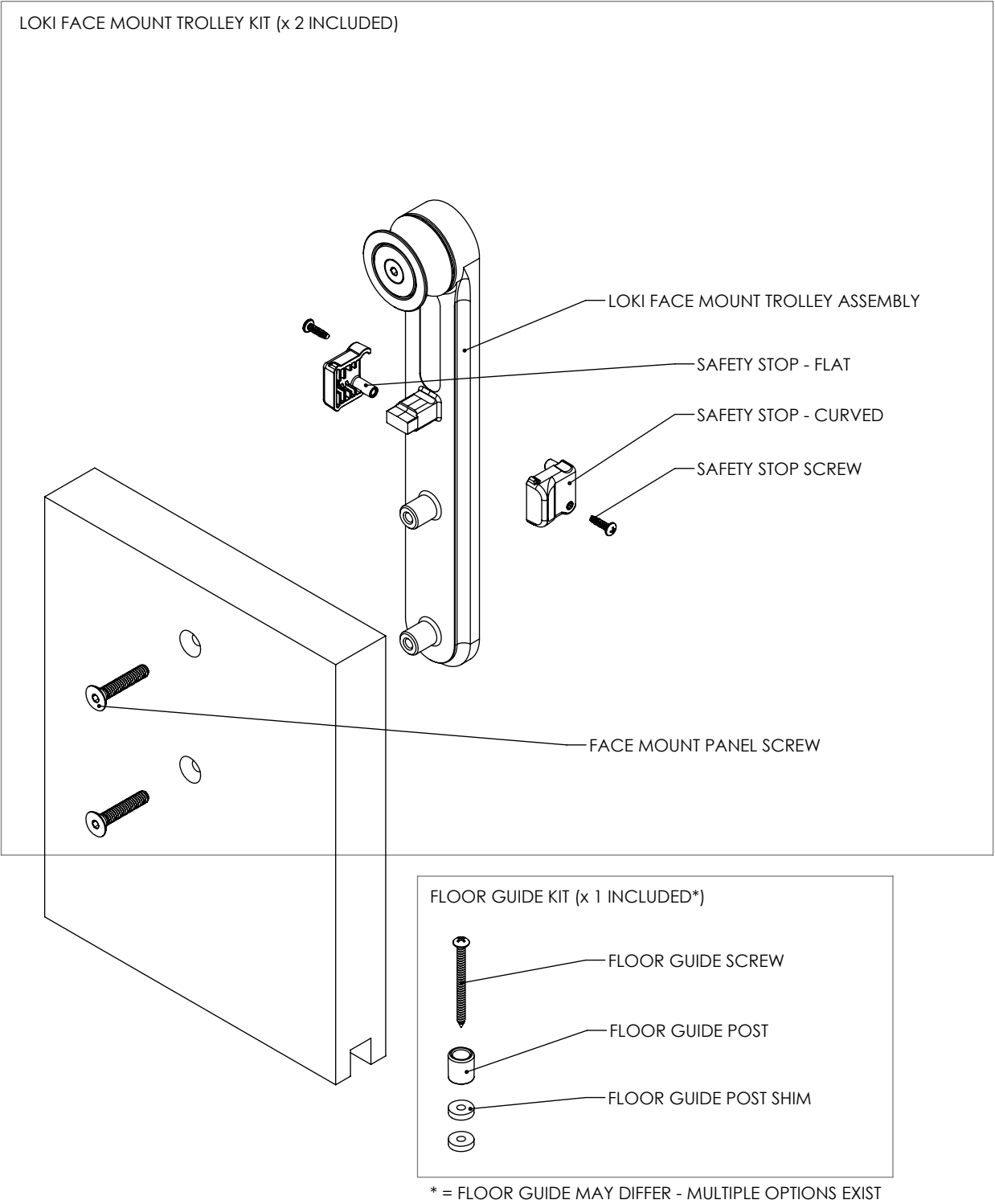
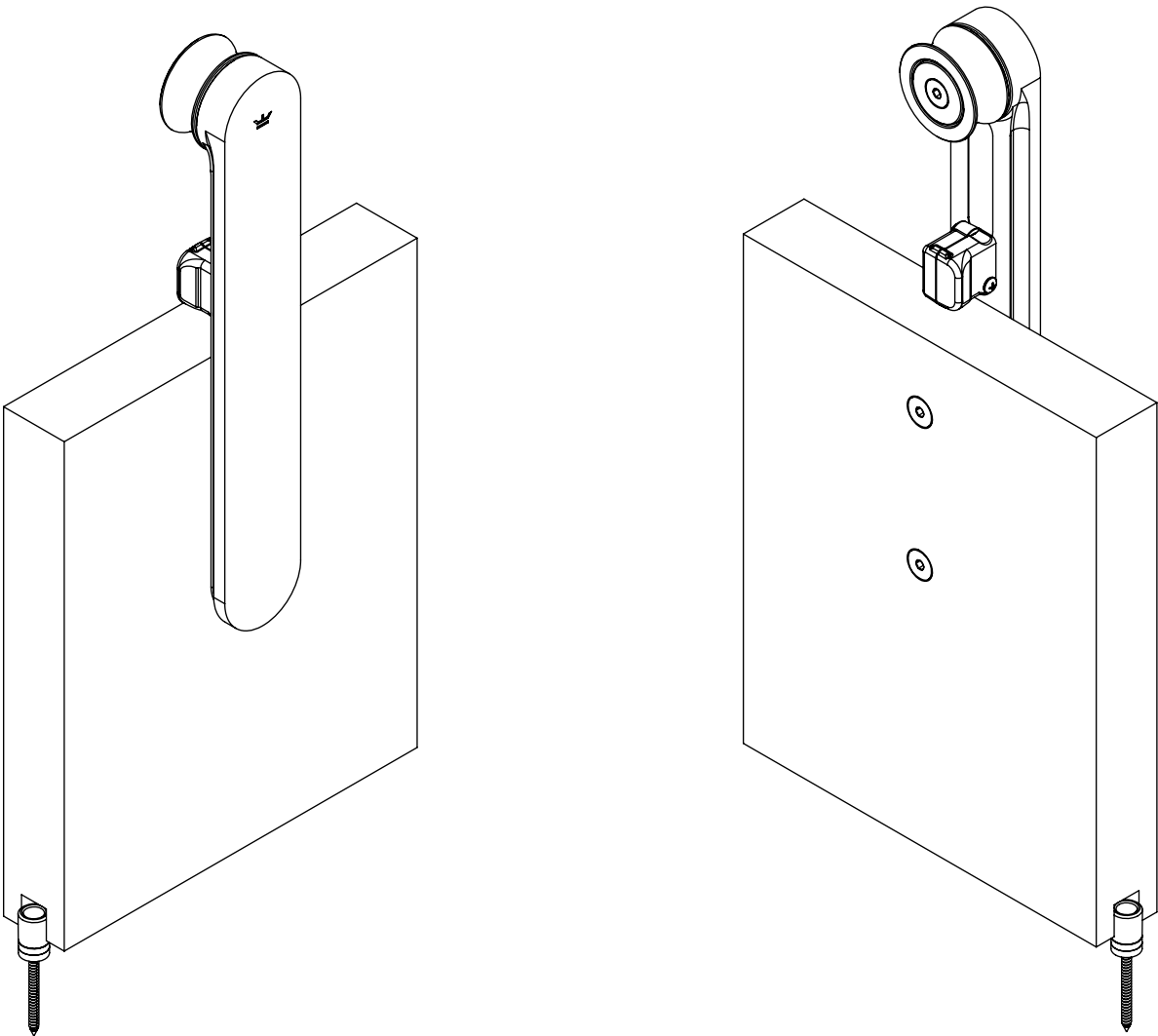



* = ADDITIONAL STANDOFF CONFIGURATIONS AVAILABLE
** = MAX WALL CLEARANCE IS 2-3/4"

*** = FLOOR GUIDE MAY DIFFER

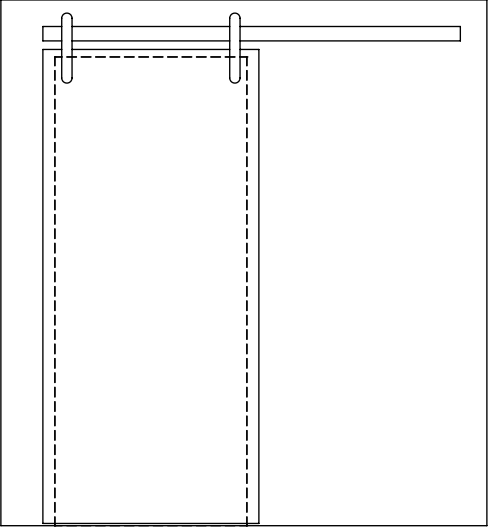
DOCUMENT:	PRODUCT SPECIFICATIONS	DOOR APPLICATION:	SINGLE & BI-PARTING	DRAWING SCALE:	4" = 1'-0" (1:3)	<div>KROWNLAB</div> <div>2351 NW York St.</div> <div>Portland, OR 97210</div> <div>+1 503 292 6998</div> <div>www.krownlab.com</div> <div>support@krownlab.com</div> <div><div><div></div></div><div>KROWNLAB</div><div>PDR · ORE</div></div>
SYSTEM:	LOKI	PANEL THICKNESS:	1-1/4" TO 1-3/4" (UP TO 2-3/8" WITHOUT DOOR TRIM)	UNITS:	INCHES	
MOUNTING STYLE:	FACE MOUNT	MAXIMUM WEIGHT:	UP TO 200LBS (CONTACT US FOR HEAVIER PANELS)	DATE:	3/6/2024	

WHAT'S INCLUDED:
2 x LOKI FACE MOUNT TROLLEY KIT
1 x FLOOR GUIDE KIT (FLOOR GUIDE MAY DIFFER - MULTIPLE OPTIONS EXIST)
1 x TRU-LEVEL™ TRACK SYSTEM WITH ALL MOUNTING HARDWARE (SEE SEPARATE PAGE)

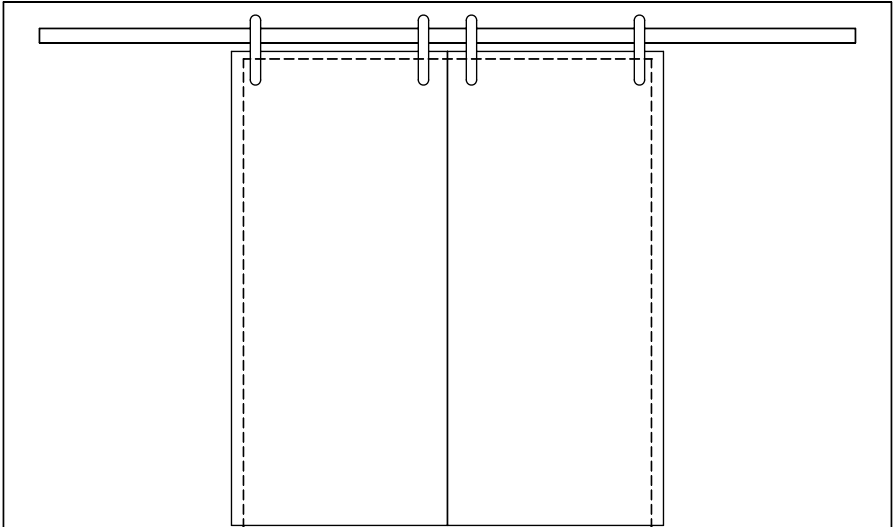


DOCUMENT:	PRODUCT SPECIFICATIONS - DOOR CONFIGURATIONS	DOOR APPLICATION:	SINGLE, BI-PARTING	DRAWING SCALE:	3/8" = 1'-0" (1:32)	<div>KROWNLAB</div> <div>2351 NW York St.</div> <div>Portland, OR 97210</div> <div>+1 503 292 6998</div> <div>www.krownlab.com</div> <div>support@krownlab.com</div> <div><div></div><div>KROWNLAB</div><div>PDR - ORE</div></div>
SYSTEM:	TRU-LEVEL™ TRACK	PANEL THICKNESS:	TROLLEY SYSTEM OR TRACK CONFIGURATION DEPENDENT	UNITS:	INCHES	
MOUNTING STYLE:	FRAMED WALL	MAXIMUM WEIGHT:	TROLLEY SYSTEM OR TRACK CONFIGURATION DEPENDENT	DATE:	3/12/2018	

SINGLE



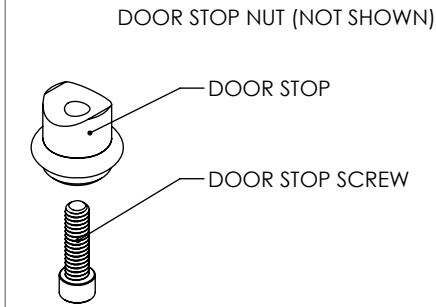
BI-PARTING



DOCUMENT:	PRODUCT SPECIFICATIONS	DOOR APPLICATION:	SINGLE, BI-PARTING, BYPASSING	DRAWING SCALE:	6" = 1'-0" (1:2)	<div>KROWNLAB</div> <div>2351 NW York St.</div> <div>Portland, OR 97210</div> <div>+1 503 292 6998</div> <div>www.krownlab.com</div> <div>support@krownlab.com</div> <div><div><div>KROWNLAB</div><div>FOX · GRE</div></div></div>
SYSTEM:	TRU-LEVEL™ TRACK	PANEL THICKNESS:	TROLLEY SYSTEM AND TRACK CONFIGURATION DEPENDENT	UNITS:	INCHES	
MOUNTING STYLE:	FRAMED WALL	MAXIMUM WEIGHT:	TROLLEY SYSTEM AND TRACK CONFIGURATION DEPENDENT	DATE:	11/16/2023	

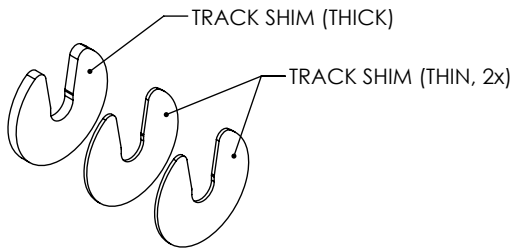
WHAT'S INCLUDED:
1 x TRU-LEVEL™ TRACK SYSTEM WITH ALL MOUNTING HARDWARE:
X x TRACK MOUNT KIT
2 x DOOR STOP KIT
X x TRACK CONNECTOR KIT (1 x PER TRACK JOINT INLCUED)

DOOR STOP KIT (x 2 INCLUDED*)



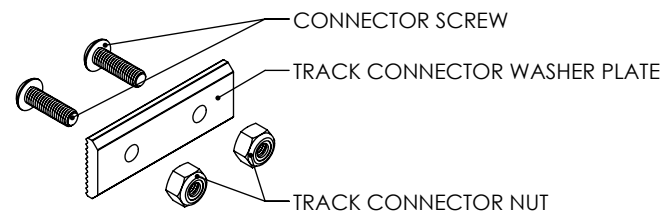
* = THE DOOR STOP MAY DIFFER - MULTIPLE OPTIONS EXIST

TRACK SHIM KIT (SYSTEM ADD-ON)

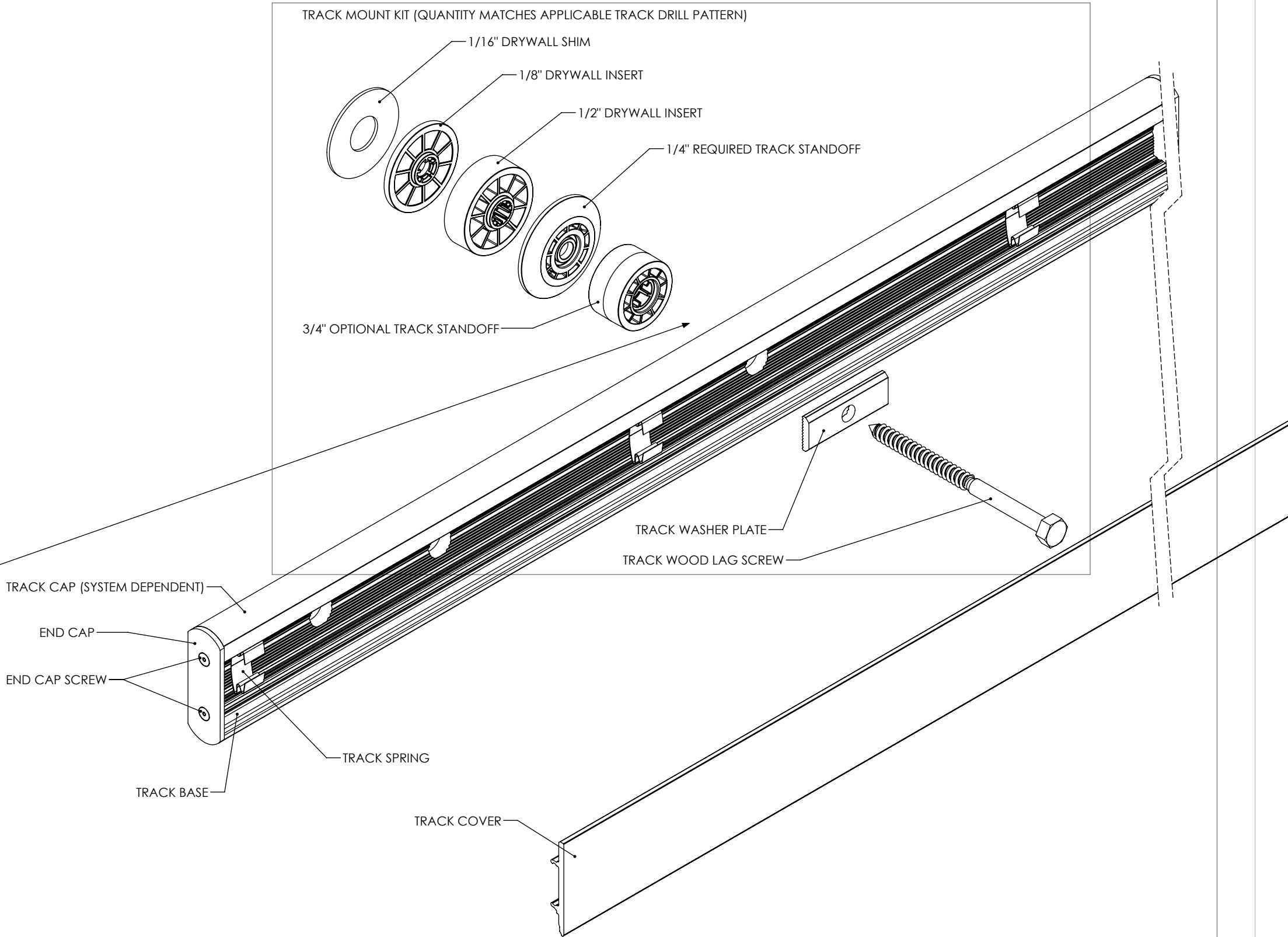



TRACK SHIMS ARE DESIGNED TO BE INSTALLED AGAINST TRACK

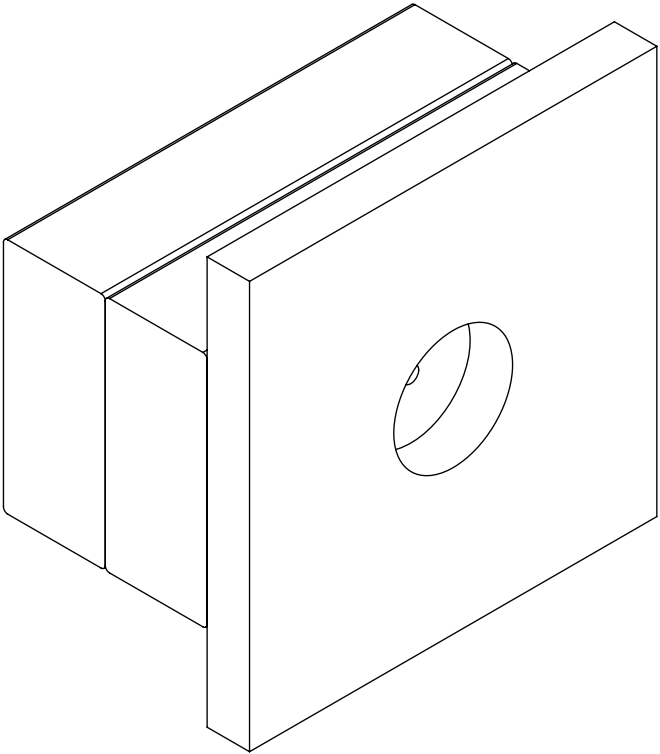
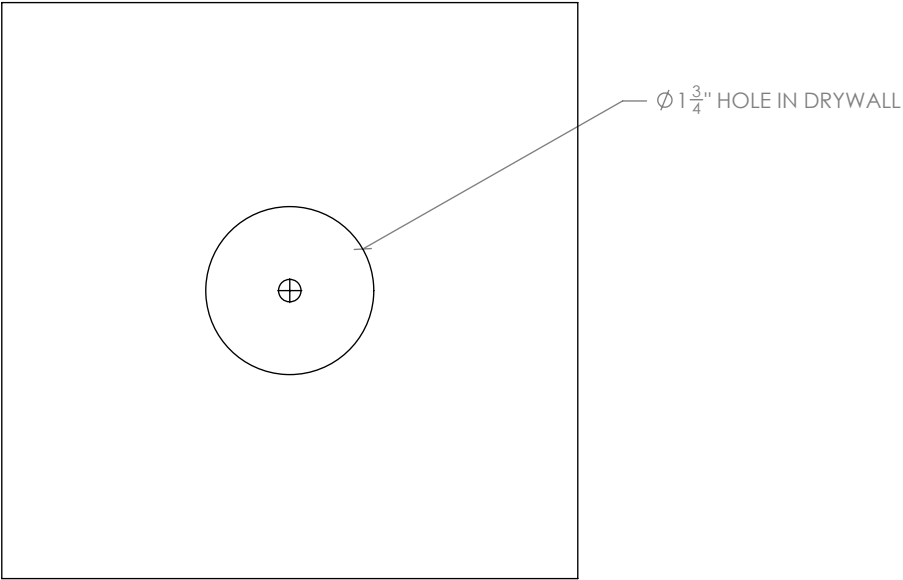
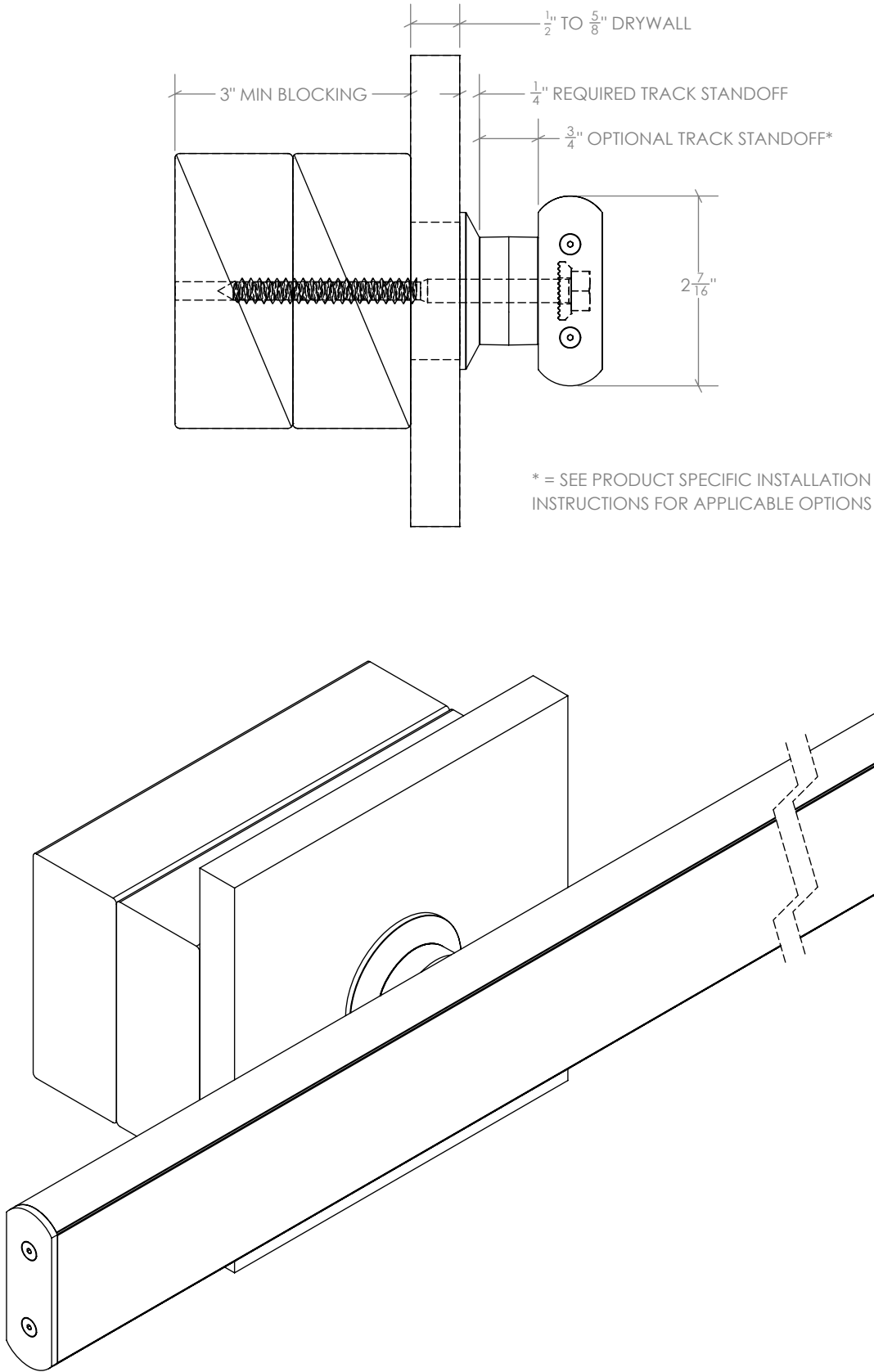
TRACK CONNECTOR KIT
(1 x PER TRACK JOINT INLCUED)



TRU-LEVEL™ TRACK SYSTEM

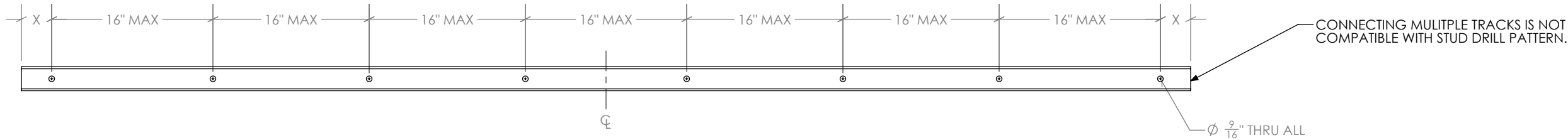


DOCUMENT:	PRODUCT SPECIFICATIONS - STANDARD TRACK MOUNTING POINT	DOOR APPLICATION:	SINGLE, BI-PARTING, BYPASSING	DRAWING SCALE:	6" = 1'-0" (1:2)	<div>KROWNLAB</div> <div>2351 NW York St. Portland, OR 97210 +1 503 292 6998 www.krownlab.com support@krownlab.com</div> <div><div></div><div>FOX GRE</div></div>
SYSTEM:	TRU-LEVEL™ TRACK	PANEL THICKNESS:	TROLLEY SYSTEM AND TRACK CONFIGURATION DEPENDENT	UNITS:	INCHES	
MOUNTING STYLE:	FRAMED WALL	MAXIMUM WEIGHT:	TROLLEY SYSTEM AND TRACK CONFIGURATION DEPENDENT	DATE:	11/14/2023	



DOCUMENT:	PRODUCT SPECIFICATIONS - UNDRILLED TRACK DRILL PATTERN GUIDE	DOOR APPLICATION:	SINGLE & BI-PARTING	DRAWING SCALE:	1" = 1'-0" (1:12)	<div>KROWNLAB</div> <div>2351 NW York St.</div> <div>Portland, OR 97210</div> <div>+1 503 292 6998</div> <div>www.krownlab.com</div> <div>support@krownlab.com</div> <div><div><div></div></div><div>KROWNLAB</div><div>PDR · DRE</div></div>
SYSTEM:	TRU-LEVEL™ TRACK	PANEL THICKNESS:	TROLLEY SYSTEM DEPENDENT	UNITS:	INCHES	
MOUNTING STYLE:	FRAMED WALL	MAXIMUM WEIGHT:	SEE BELOW	DATE:	3/6/2024	

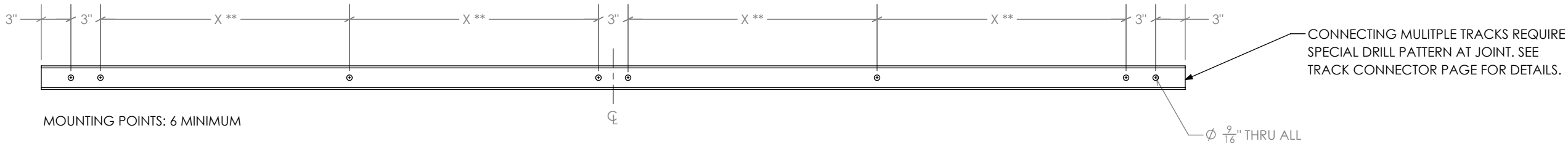
STUD DRILL PATTERN: UP TO 250 LBS* WITH 1" MAXIMUM TRACK STANDOFF. UP TO 200 LBS WITH 1-3/4" MAXIMUM TRACK STANDOFF.



PANEL WEIGHT	X	MOUNTING POINTS
UP TO 100 LBS	5"	4 MINIMUM
101 TO 200 LBS	4"	6 MINIMUM
201 TO 250 LBS	3"	6 MINIMUM

"X" IS THE MAXIMUM LENGTH OF TRACK ALLOWED BEYOND END MOUNTING POINTS

STRUCTURAL BLOCKING DRILL PATTERN: UP TO 400 LBS* WITH MAXIMUM 1" TRACK STANDOFF.



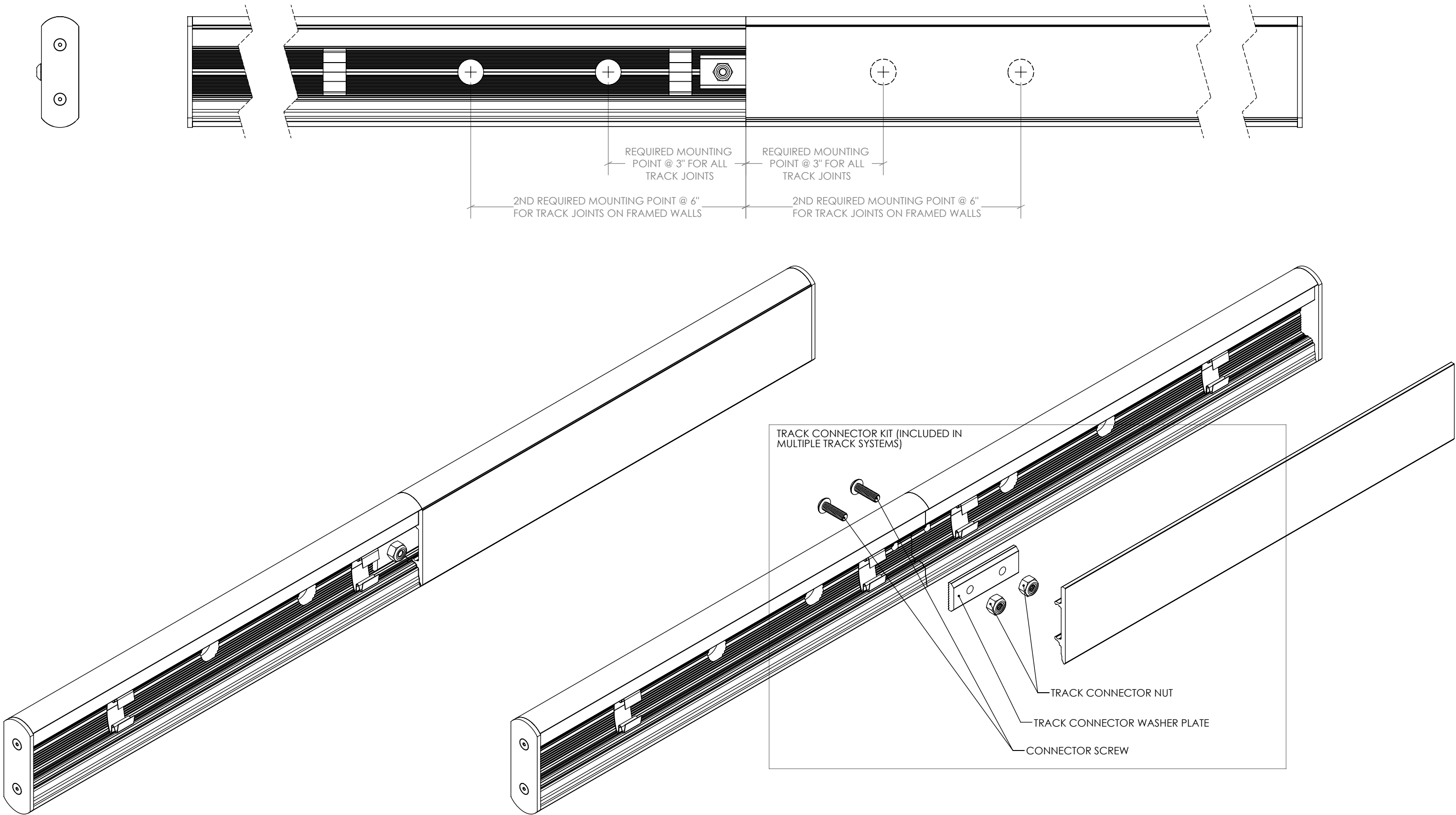
MOUNTING POINTS: 6 MINIMUM

** = EVENLY SPACED

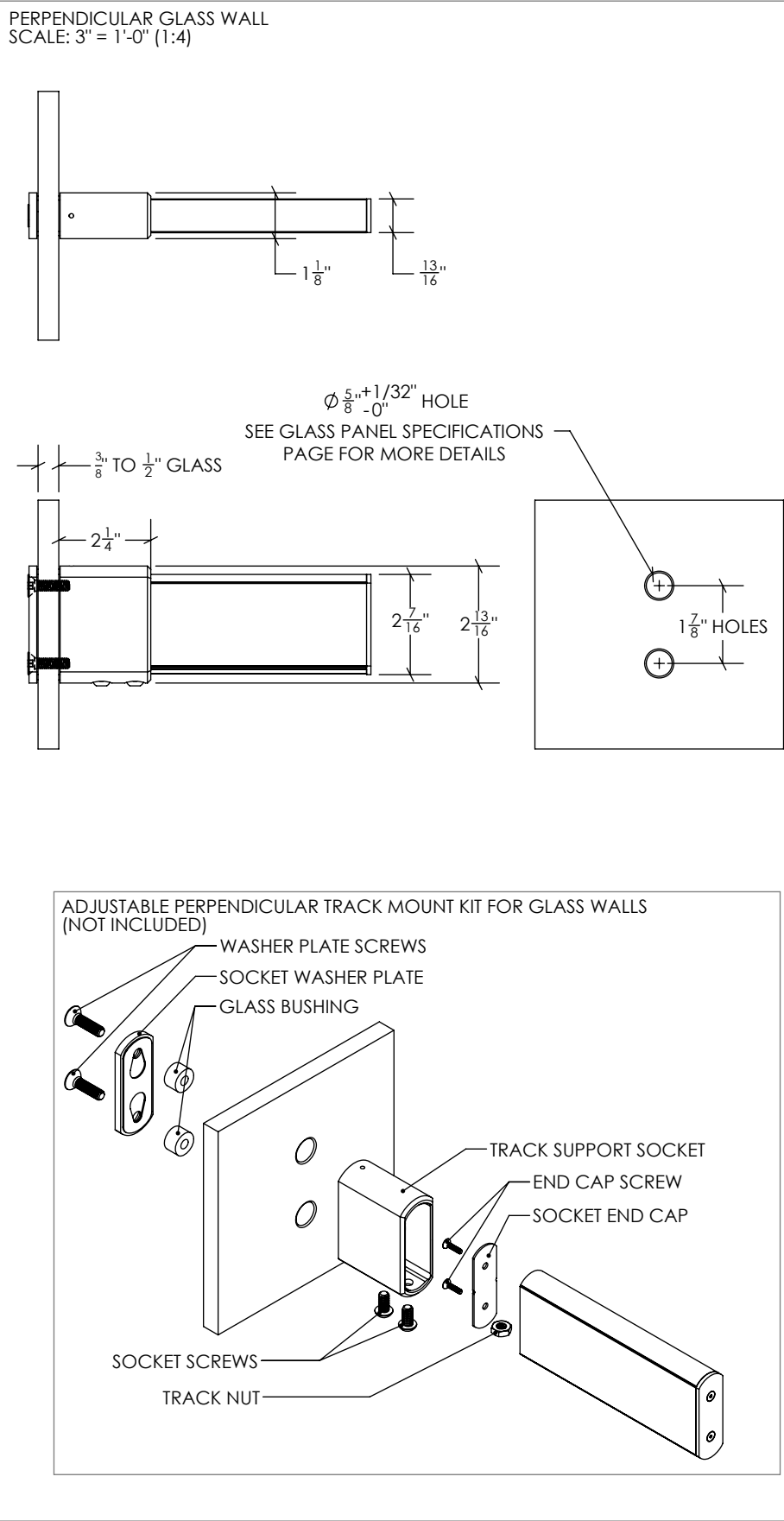
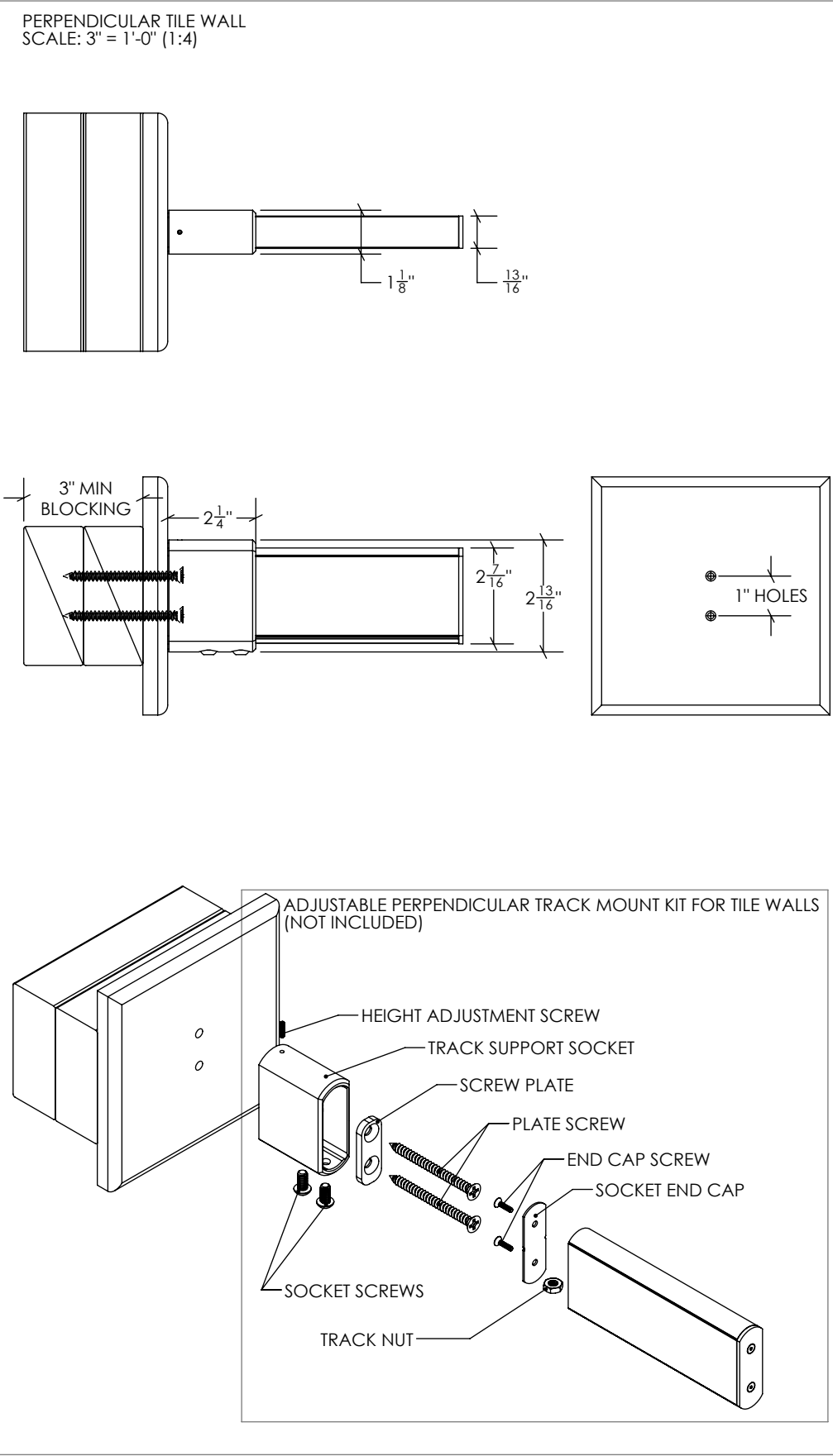
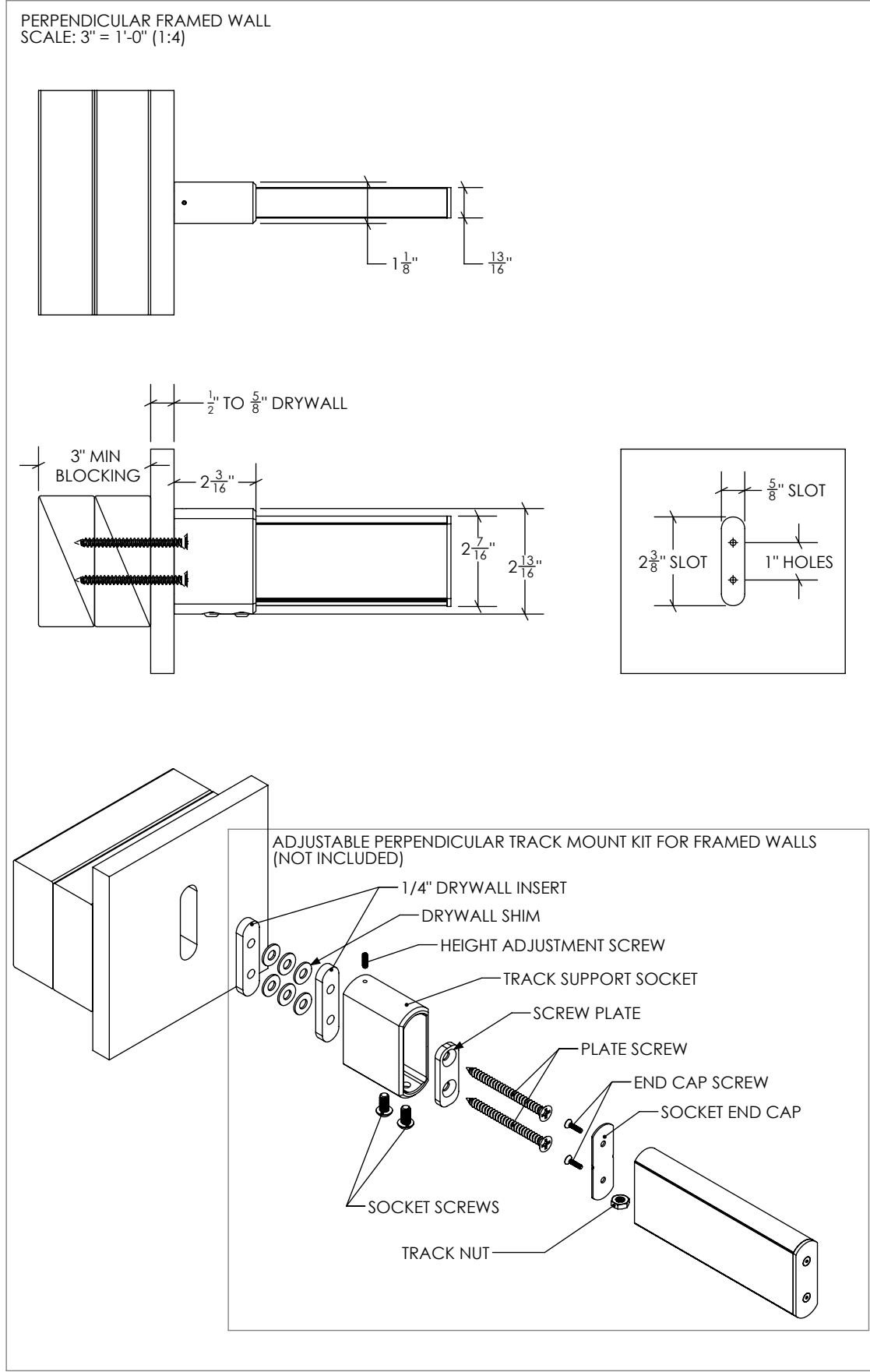
SPAN (X)	MAX. PANEL WEIGHT
UP TO 28"	200 LB.
UP TO 24"	400 LB.

* WEIGHT LIMIT MAY BE FURTHER RESTRICTED BY TROLLEY SYSTEM

DOCUMENT:	PRODUCT SPECIFICATIONS - TRACK CONNECTOR	DOOR APPLICATION:	SINGLE & BI-PARTING	DRAWING SCALE:	6" = 1'-0" (1:2)	<div>KROWNLAB</div> <div>2351 NW York St.</div> <div>Portland, OR 97210</div> <div>+1 503 292 6998</div> <div>www.krownlab.com</div> <div>support@krownlab.com</div> <div><div>KROWNLAB</div><div>FOK · GFE</div></div>
SYSTEM:	TRU-LEVEL™ TRACK	PANEL THICKNESS:	TROLLEY SYSTEM AND TRACK CONFIGURATION DEPENDENT	UNITS:	INCHES	
MOUNTING STYLE:	ALL WALL TYPES	MAXIMUM WEIGHT:	TROLLEY SYSTEM AND TRACK CONFIGURATION DEPENDENT	DATE:	11/16/2023	



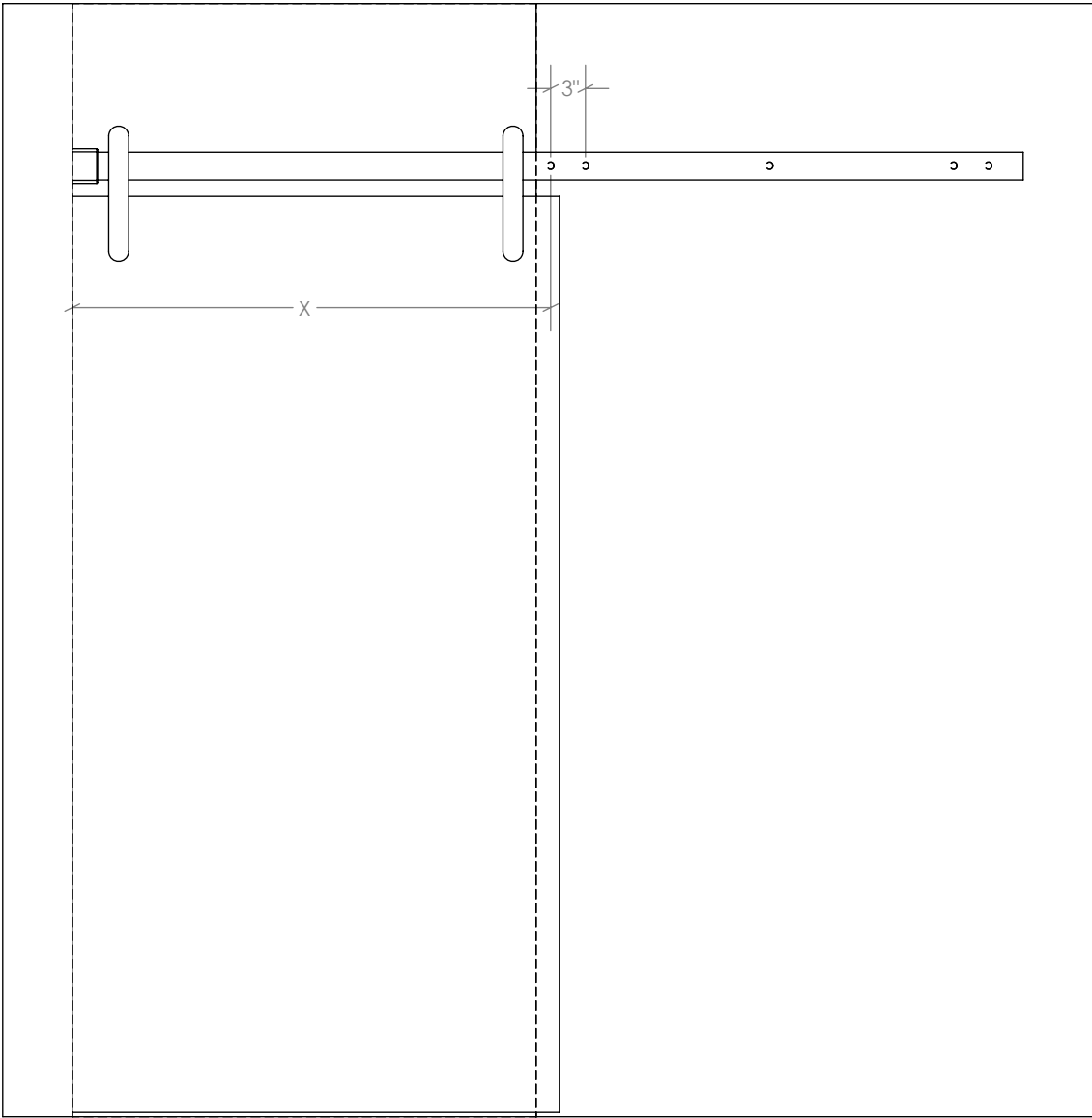
DOCUMENT:	PRODUCT SPECIFICATIONS - PERPENDICULAR TRACK MOUNTING POINT	DOOR APPLICATION:	SINGLE, BI-PARTING, BYPASSING	DRAWING SCALE:	3/4" = 1'-0" (1:16)	<div>KROWNLAB</div> <div>2351 NW York St.</div> <div>Portland, OR 97210</div> <div>+1 503 292 6998</div> <div>www.krownlab.com</div> <div>support@krownlab.com</div> <div><div><div></div></div><div>KROWNLAB</div><div>PDF GFF</div></div>
SYSTEM:	TRU-LEVEL™ TRACK	PANEL THICKNESS:	3/8" TO 1/2" (CONTACT US FOR PANELS OUTSIDE OF THIS RANGE)	UNITS:	INCHES	
MOUNTING STYLE:	FRAMED WALL, TILED WALL, GLASS WALL	MAXIMUM WEIGHT:	TROLLEY SYSTEM AND TRACK CONFIGURATION DEPENDENT	DATE:	11/16/2023	



DOCUMENT:	PRODUCT SPECIFICATIONS - PERPENDICULAR TRACK MOUNTING POINT	DOOR APPLICATION:	SINGLE	DRAWING SCALE:	3/4" = 1'-0" (1:16)	<div>KROWNLAB</div> <div>2351 NW York St.</div> <div>Portland, OR 97210</div> <div>+1 503 292 6998</div> <div>www.krownlab.com</div> <div>support@krownlab.com</div> <div><div><div></div></div><div>KROWNLAB®</div><div>PDF GFF</div></div>
SYSTEM:	TRU-LEVEL™ TRACK	PANEL THICKNESS:	TROLLEY SYSTEM DEPENDENT	UNITS:	INCHES	
MOUNTING STYLE:	FRAMED WALL	MAXIMUM WEIGHT:	TROLLEY SYSTEM AND TRACK CONFIGURATION DEPENDENT	DATE:	12/28/2018	

INSTALLED INTO STRUCTURAL BLOCKING (OPTIMAL)

SPAN (X)	MAX. PANEL WEIGHT
UP TO 38"	300lb
UP TO 44"	275lb
UP TO 50"	250lb
UP TO 62"	225lb



INSTALLED INTO WOOD STUDS

SPAN (X)	MAX. PANEL WEIGHT
UP TO 38"	150lb
UP TO 44"	125lb
UP TO 50"	100lb

