

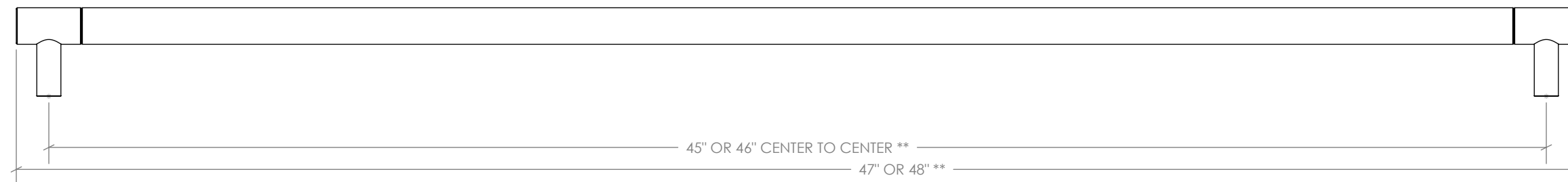
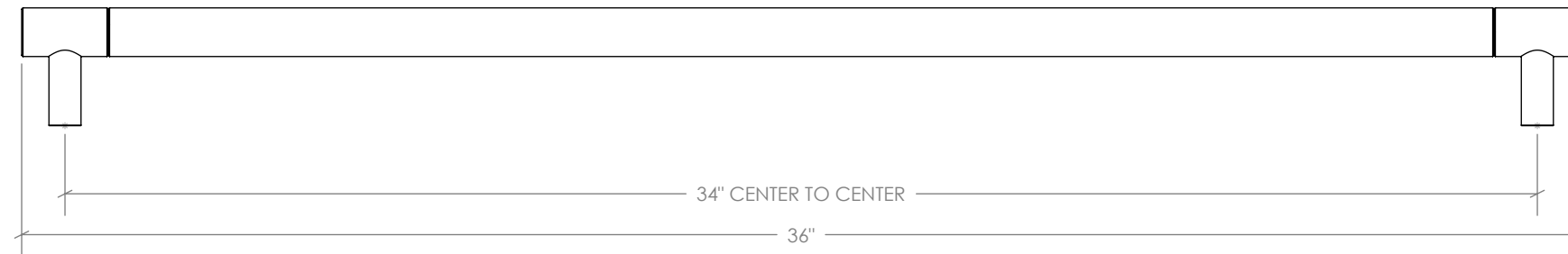
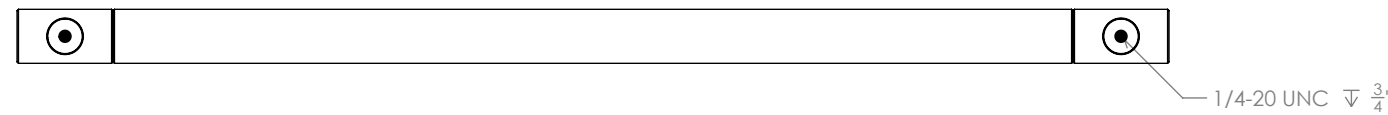
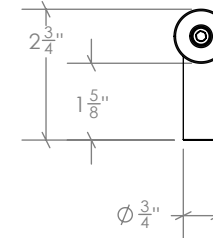
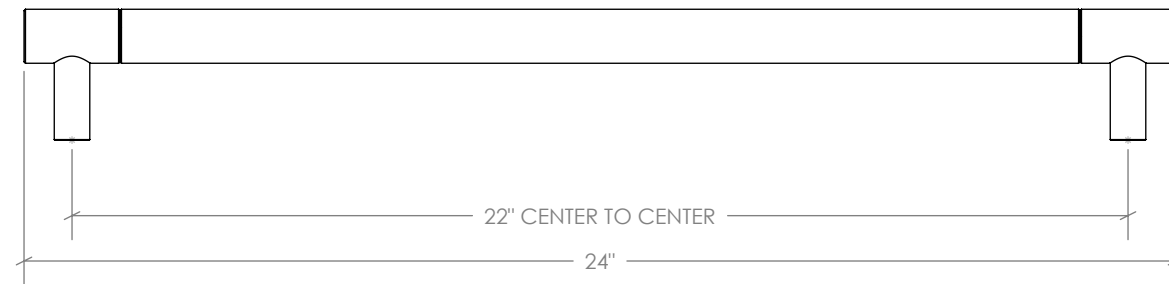
DOCUMENT: PRODUCT SPECIFICATIONS	DOOR APPLICATION: SINGLE & BI-PARTING	DRAWING SCALE: 3" = 1'-0" (1:4)	KROWNLAB 2351 NW York St. Portland, OR 97210 +1 503 292 6998 www.krownlab.com support@krownlab.com
SYSTEM: KOR DOOR PULL	PANEL THICKNESS: SEE TABLE BELOW	UNITS: INCHES	
MOUNTING STYLE: WOOD AND GLASS*	MAXIMUM WEIGHT: N/A	DATE: 2/4/2021	



DOOR PANEL THICKNESS RANGE

WOOD	GLASS*
1-3/8" TO 3"	3/8" TO 3/4"

CONTACT US FOR PANELS OUTSIDE OF THIS RANGE



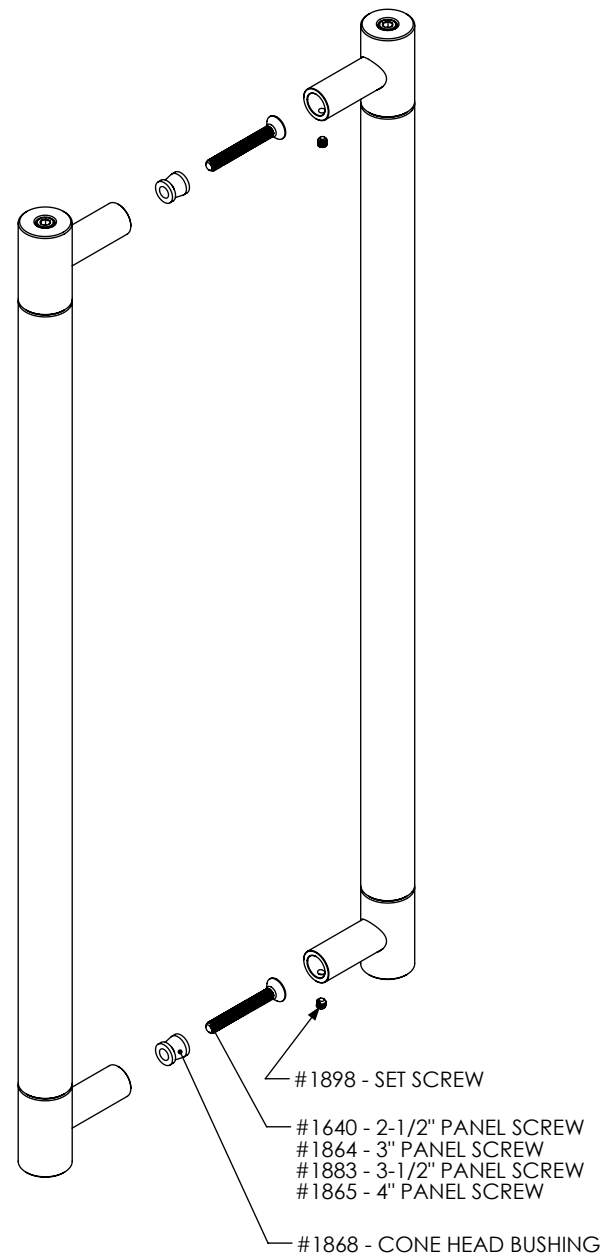
* = SEE GLASS SPECIFICATIONS PAGE FOR MORE INFORMATION.
 ** = LENGTH BASED ON ORDER DATE. CONTACT US.

DOCUMENT:	PRODUCT SPECIFICATIONS	DOOR APPLICATION:	SINGLE & BI-PARTING	DRAWING SCALE:	3" = 1'-0" (1:4)	KROWNLAB 2351 NW York St. Portland, OR 97210 +1 503 292 6998 www.krownlab.com support@krownlab.com	
SYSTEM:	KOR DOOR PULL	PANEL THICKNESS:	KOR PULL CONFIGURATION DEPENDENT	UNITS:	INCHES		
MOUNTING STYLE:	WOOD & GLASS (SEE GLASS SPECIFICATIONS PAGE FOR MORE INFORMATION)	MAXIMUM WEIGHT:	N/A	DATE:	2/4/2021		

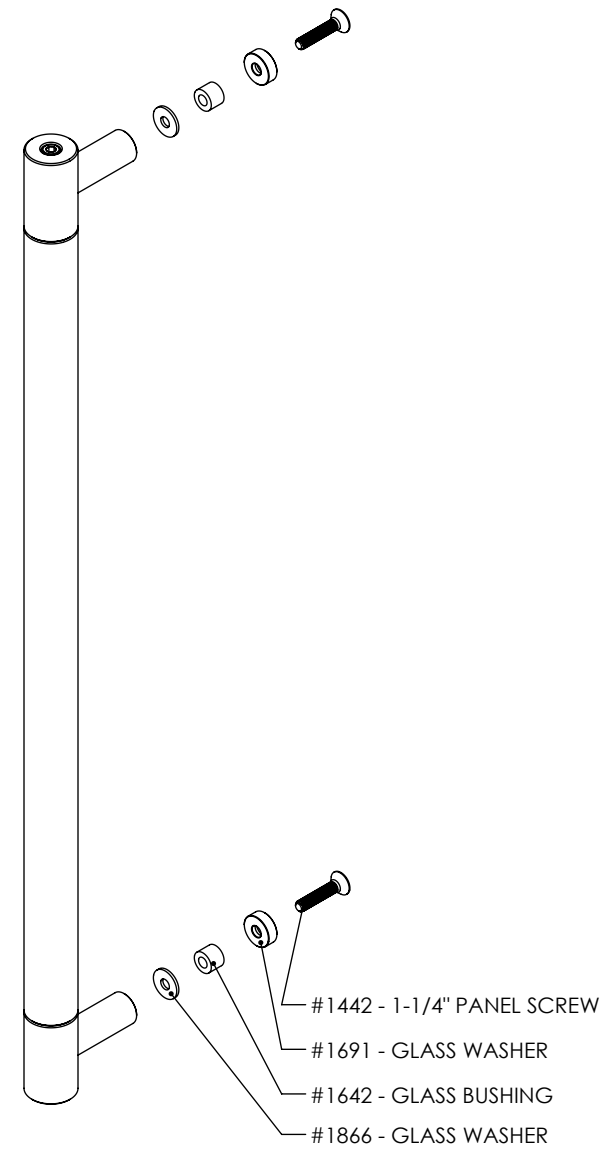
SINGLE SIDED WOOD



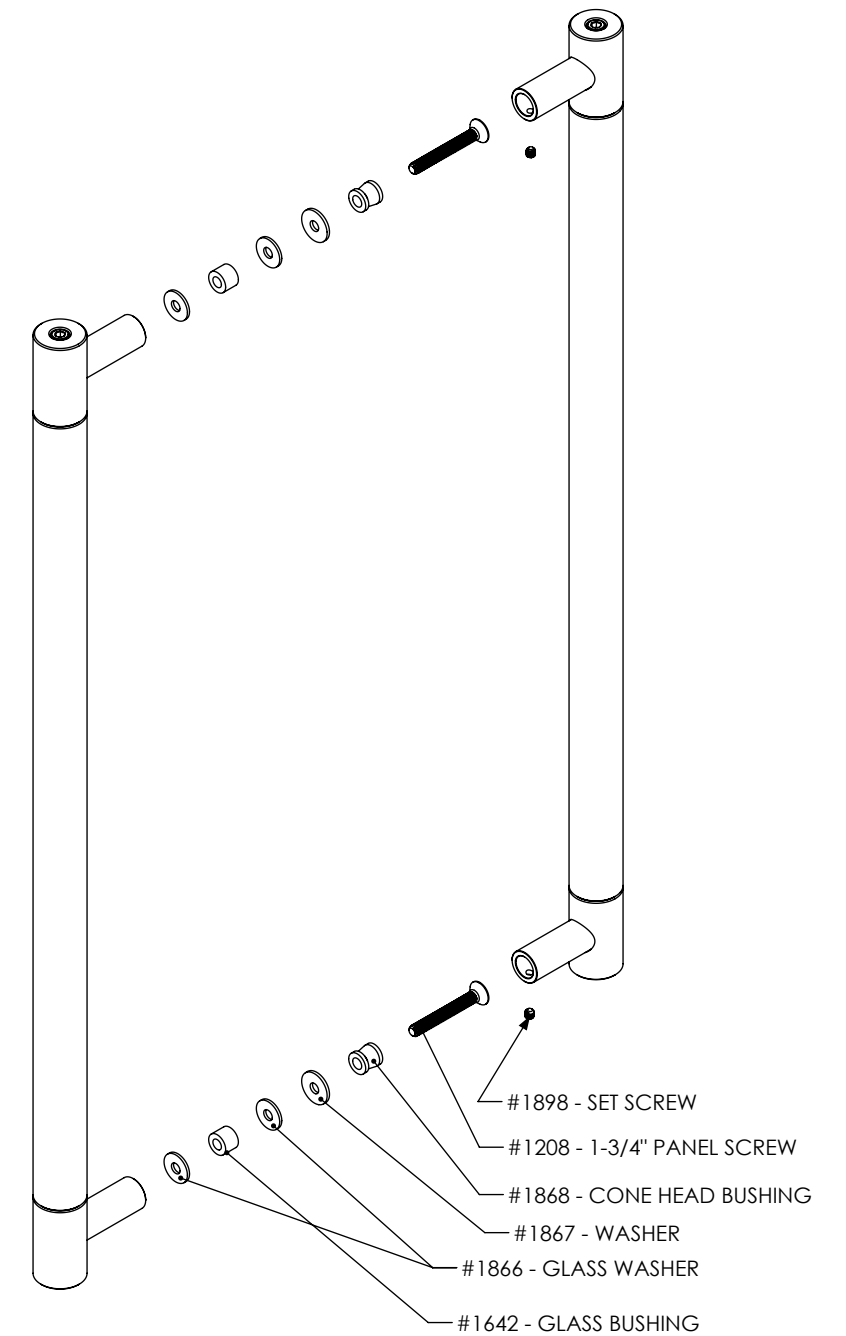
DOUBLE SIDED WOOD



SINGLED SIDED GLASS



DOUBLE SIDED GLASS



DOCUMENT:	PRODUCT SPECIFICATIONS	DOOR APPLICATION:	SINGLE & BI-PARTING	DRAWING SCALE:	3/4" = 1'-0" (1:16)	KROWNLAB 2351 NW York St. Portland, OR 97210 +1 503 292 6998 www.krownlab.com support@krownlab.com	
SYSTEM:	KOR DOOR PULL	PANEL THICKNESS:	3/8" TO 3/4" (CONTACT US FOR PANELS OUTSIDE OF THIS RANGE)	UNITS:	INCHES		
MOUNTING STYLE:	GLASS	MAXIMUM WEIGHT:	N/A	DATE:	2/4/2021		

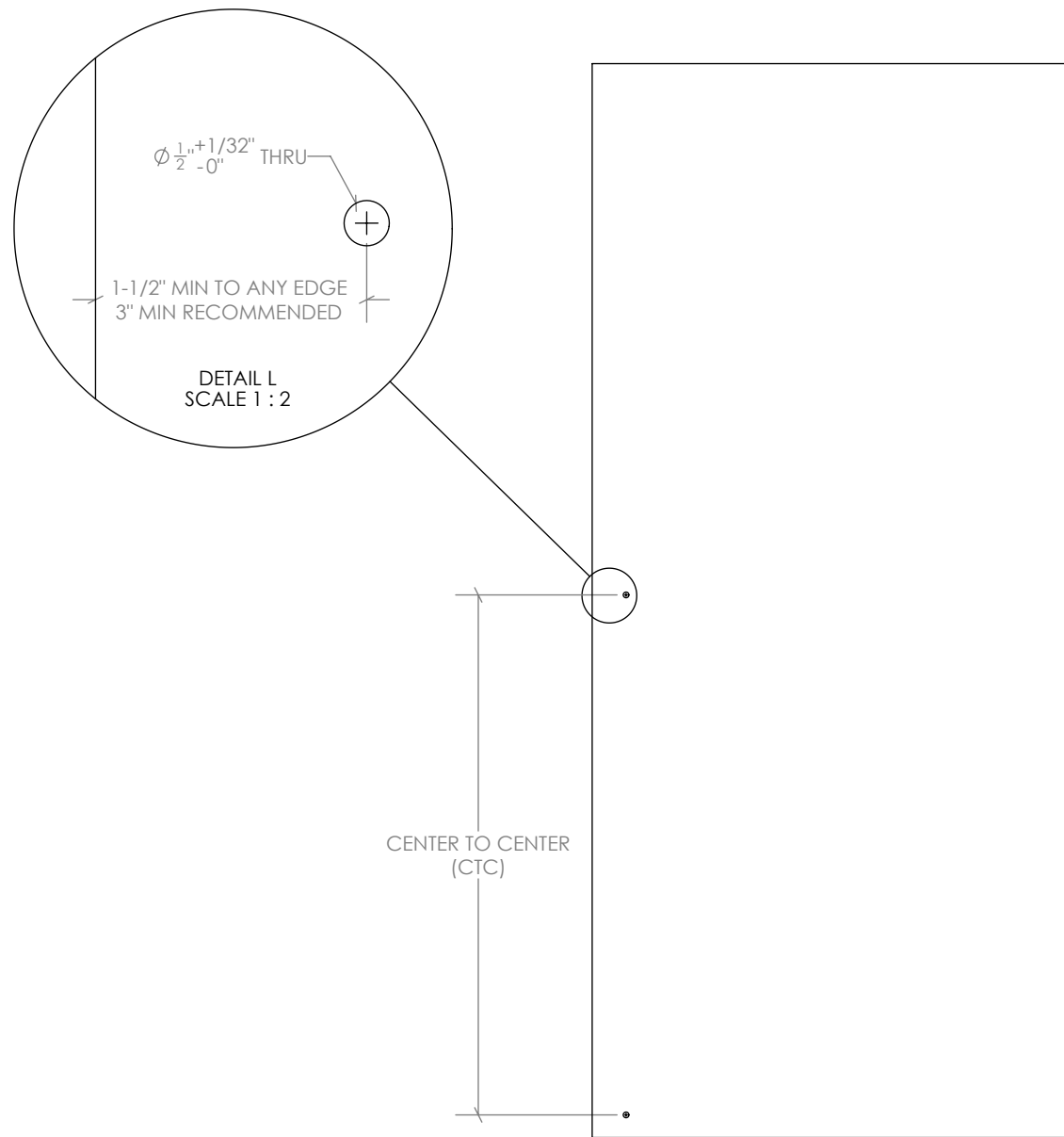
ALL GLASS PANELS AND FIXED MOUNTING HARDWARE MUST BE SOURCED THROUGH GLASS INSTALLER OR OTHER PARTY, AND MUST MEET THE FOLLOWING REQUIREMENTS:

GLASS PANELS MUST BE FLAT POLISHED AND HAVE A 1MM CHAMFER ON ALL EDGES.

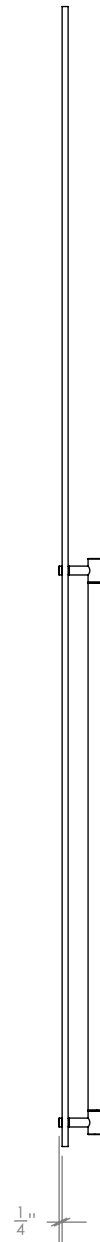
ALL HOLES MUST BE DRILLED OR CNC MACHINED WITH STRAIGHT WALLS AND SEAMED EDGES. DO NOT WATER-JET - NO TAPERED HOLES.

ALL TEMPERED GLASS IS SUBJECT TO EXPERIENCE SPONTANEOUS BREAKAGE. IT IS THE BUYERS RESPONSIBILITY TO DETERMINE AND APPROVE GLASS SPECIFICATION(S) SUITABLE TO MEET ALL FACTORS RELEVANT TO THEIR PARTICULAR USE OR APPLICATION IN CONJUNCTION WITH ALL KROWN LAB, INC.'S PRODUCTS.

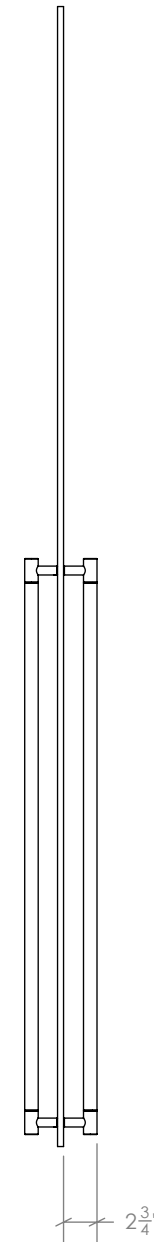
REFERENCE ASTM C1048, 7.9.5



SINGLE SIDED
48" PULL SHOWN



DOUBLE SIDED
48" PULL SHOWN



DOUBLE SIDED
48" PULL SHOWN

