

SPEC SHEET

PRODUCT NAME: RORIK BYPASSING

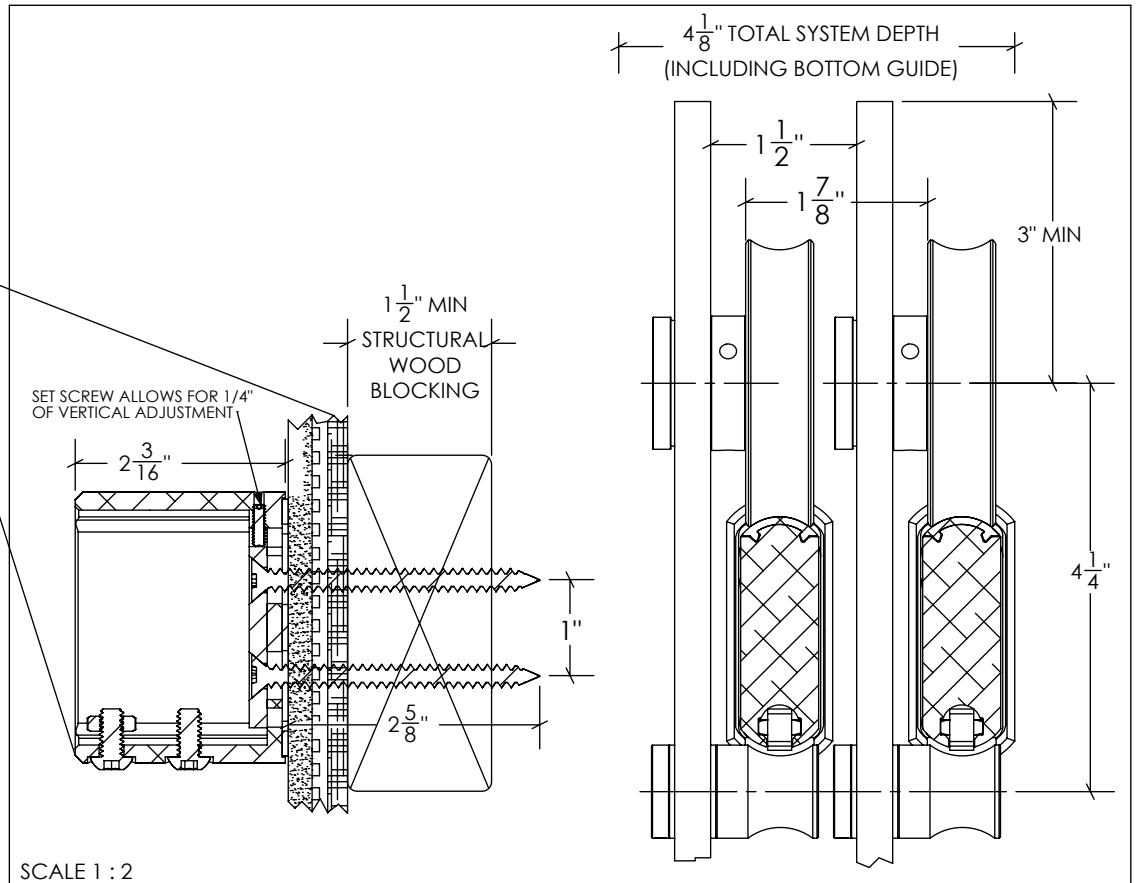
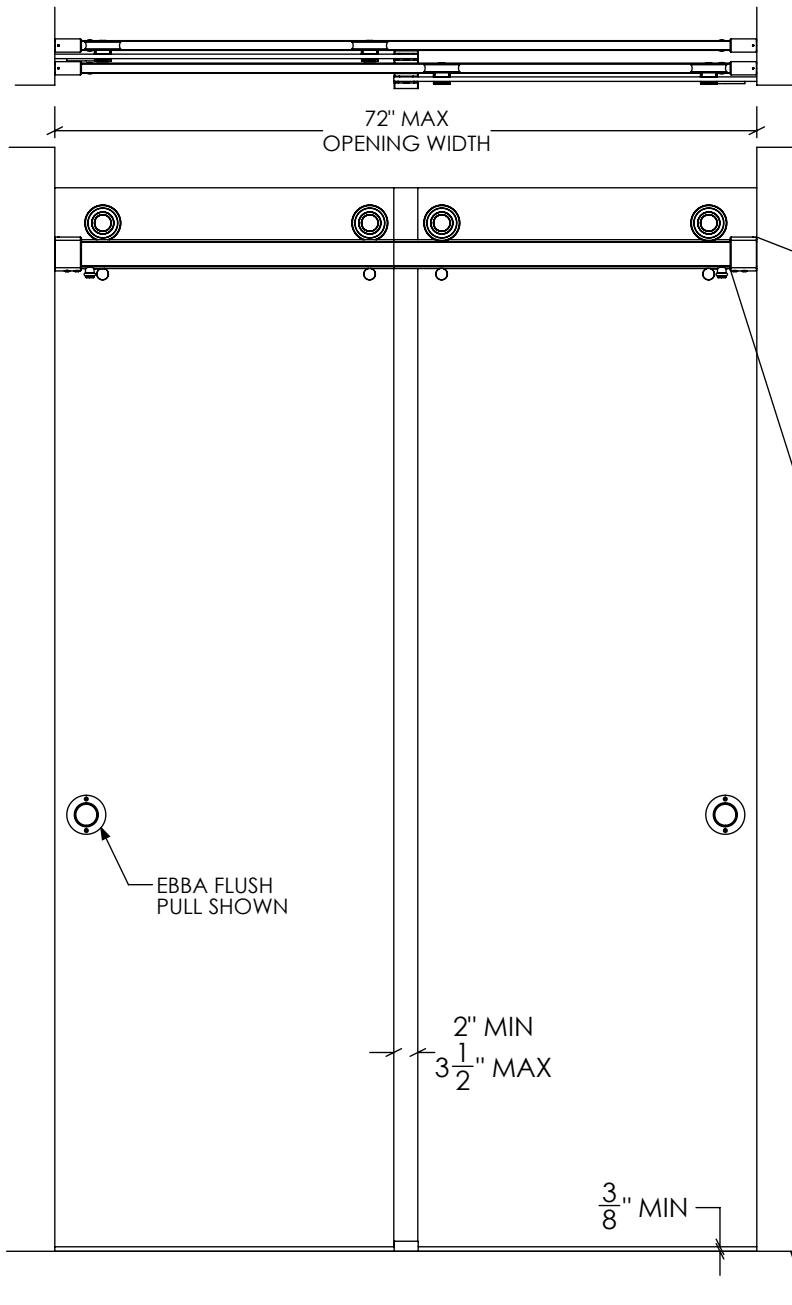
FINISH OPTIONS: Black and Brushed Stainless

DRAWING SCALE: 3/4" = 1'-0" (1:16)

PAGE: 1/3

DATE: 06/20/2017

Krownlab  
2351 NW York St.  
Portland, OR 97210  
503-292-6998  
www.krownlab.com  
support@krownlab.com

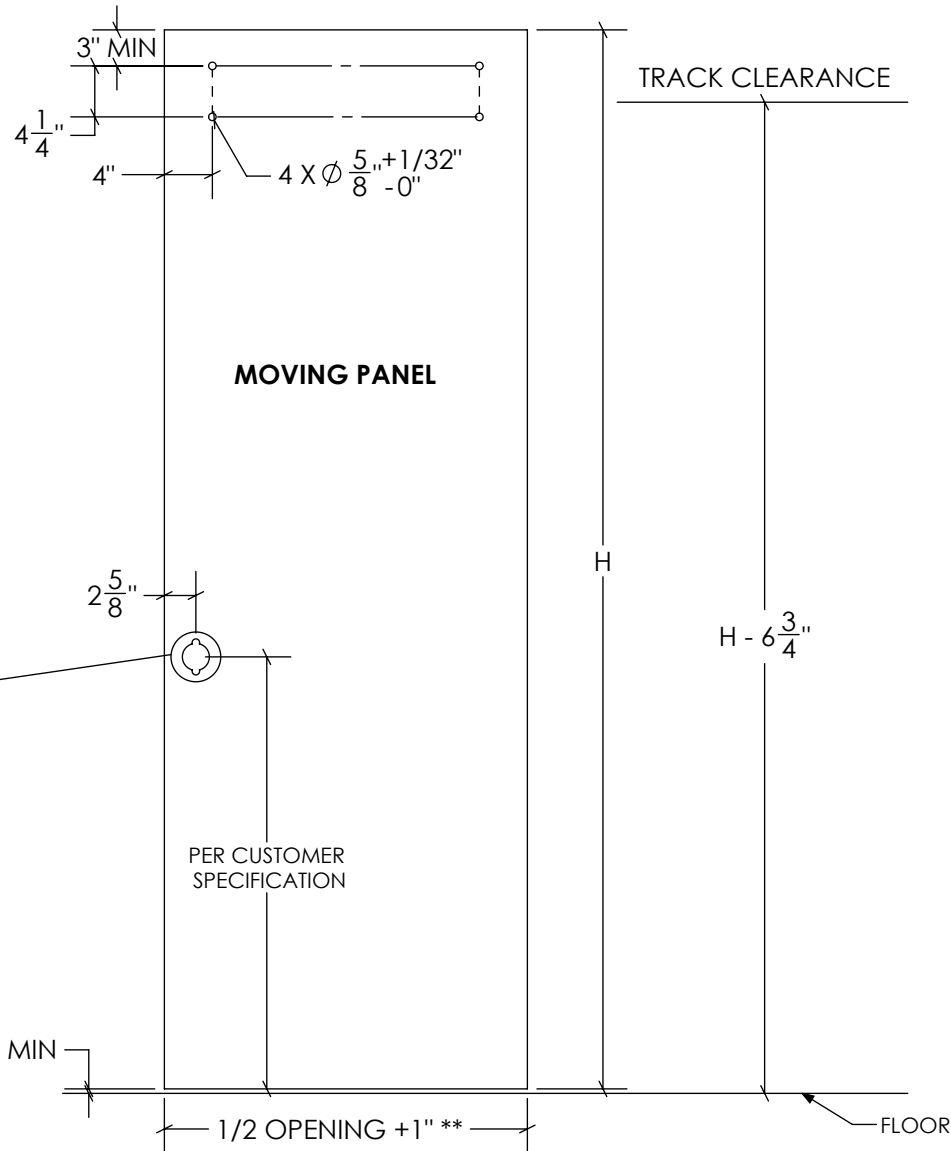


**Product Features & Technical Specifications**

- Industry leading 10 year warranty
- ADA compliant pull force at full system loading
- Supports panels up to 125 lbs at 60" track spans and 100lbs at 72" track spans
- Tru-Leveling System™ for faster, perfect installations
  - Built-in 1/4" total adjustment in all directions at each track mounting point
- Vertical panel adjustment
  - Adjust panel up to 1/8" even after installation
- Fully adjustable door stops for fast and easy control of door travel
- Available in Brushed Stainless and Black Stainless finishes
- Compatible with framed tiled walls
- Track ships standard at 78" length
- Easily cut track in the field with commonly available tools
- For door panels 1/4" to 1/2" in thickness\*
- Comprehensive line of system add-ons at [www.krownlab.com](http://www.krownlab.com)
- Full CAD available at [www.krownlab.com/downloads](http://www.krownlab.com/downloads)

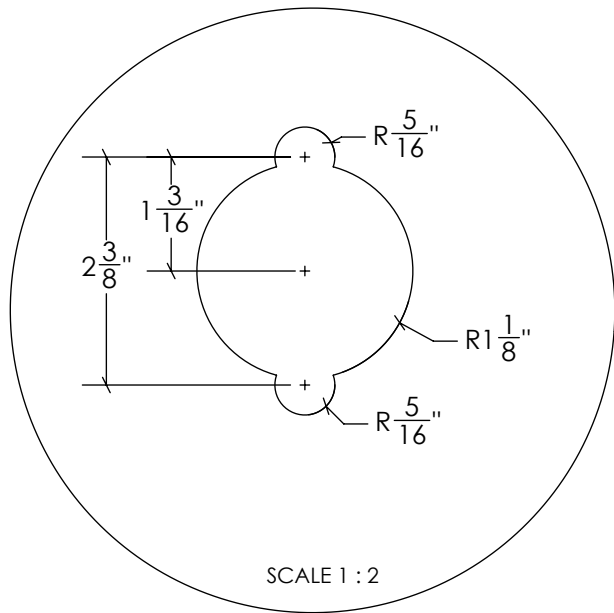
\*Panels thinner than 3/8" require some hardware modification

**FLUSH PULL  
INSTALLATIONS**



**FINISH NOTES:**

- Flat polish and bevel all edges (1mm)
- All holes must be drilled or CNC machined
- Do not water jet - no tapered holes
- Ebba Cut-out must be seamed
- Reference ASTM C1048, 7.9.6.3 and ASTM C1048, 7.9.5



SCALE 1 : 2

EBBA FLUSH PULL  
CUTOUT PREPARATION  
ALL DIMENSIONS IN THIS  
VIEW  $\pm 1/32$

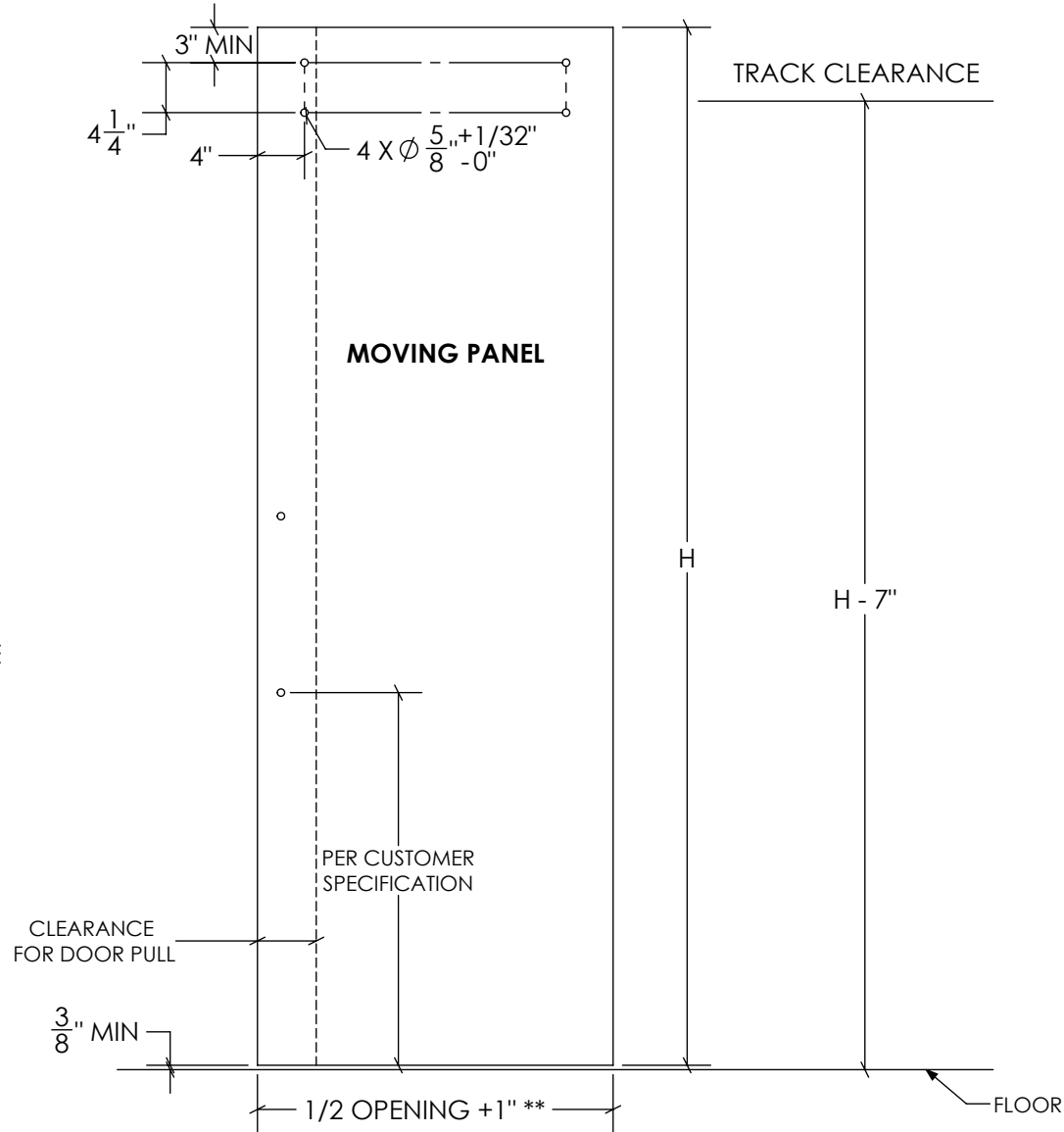
ALL TEMPERED GLASS IS SUBJECT TO EXPERIENCE SPONTANEOUS BREAKAGE. IT IS THE BUYER'S RESPONSIBILITY TO DETERMINE AND APPROVE GLASS SPECIFICATION(S) SUITABLE TO MEET ALL FACTORS RELEVANT TO THEIR PARTICULAR USE OR APPLICATION IN CONJUNCTION WITH ALL KROWN LAB, INC.'S PRODUCTS.

- Fixed panels can be  $3/8" - 1/2"$
- Moving panels can be  $*1/4" to 1/2"$
- Max panel weight is 125lb for 60" track spans and 100lbs for 72" track spans.

\* Panels thinner than  $3/8"$  require some hardware modification  
\*\*Results in 2" door overlap not accounting for necessary wall and floor clearance

**PROTRUDING PULL INSTALLATIONS**

Krownlab  
2351 NW York St.  
Portland, OR 97210  
503-292-6998  
www.krownlab.com  
support@krownlab.com



- FINISH NOTES:**
- Flat polish and bevel all edges (1mm)
  - All holes must be drilled or CNC machined with seamed edges. Do not water jet - no tapered holes
  - Reference ASTM C1048, 7.9.6.3 and ASTM C1048, 7.9.5

CLEAR OPENING = OPENING - W - DOOR PULL CLEARANCE

ALL TEMPERED GLASS IS SUBJECT TO EXPERIENCE SPONTANEOUS BREAKAGE. IT IS THE BUYER'S RESPONSIBILITY TO DETERMINE AND APPROVE GLASS SPECIFICATION(S) SUITABLE TO MEET ALL FACTORS RELEVANT TO THEIR PARTICULAR USE OR APPLICATION IN CONJUNCTION WITH ALL KROWN LAB, INC.'S PRODUCTS.

- Fixed panels can be 3/8" - 1/2"
- Moving panels can be \*1/4" to 1/2"
- Max panel weight is 125lb for 60" track spans and 100lbs for 72" track spans

\* Panels thinner than 3/8" require some hardware modification  
\*\*Results in 2" door overlap not accounting for necessary wall and floor clearance