

SPEC SHEET

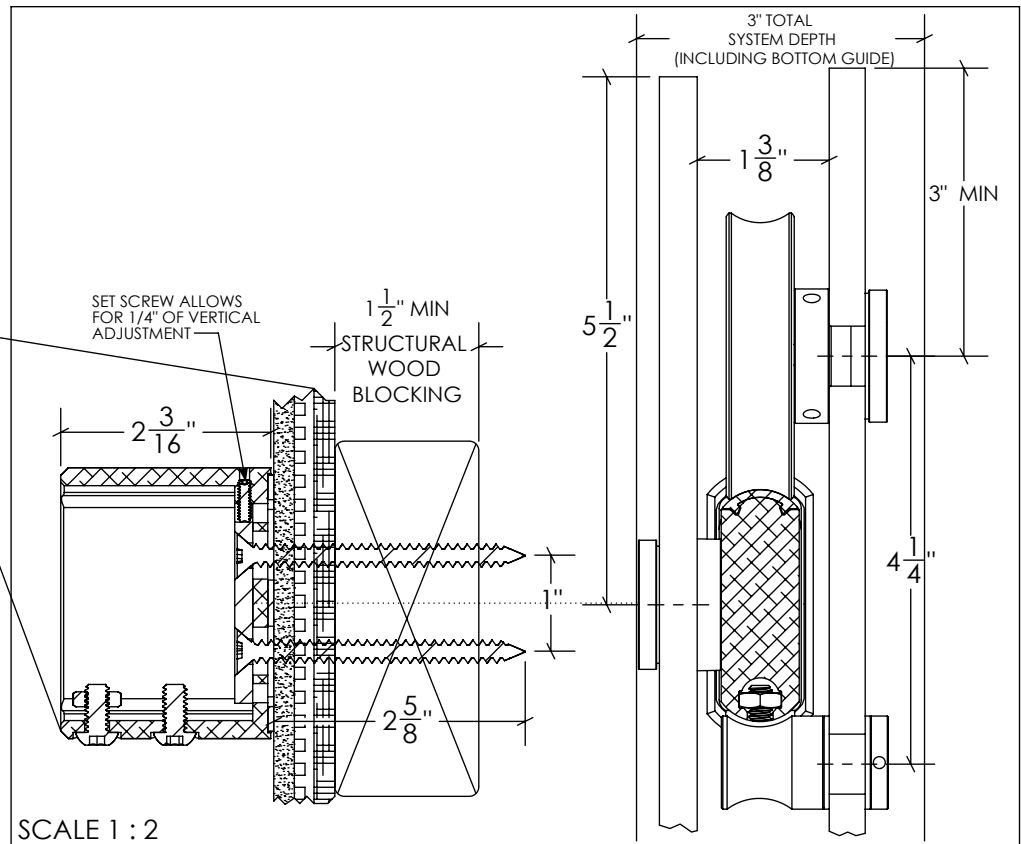
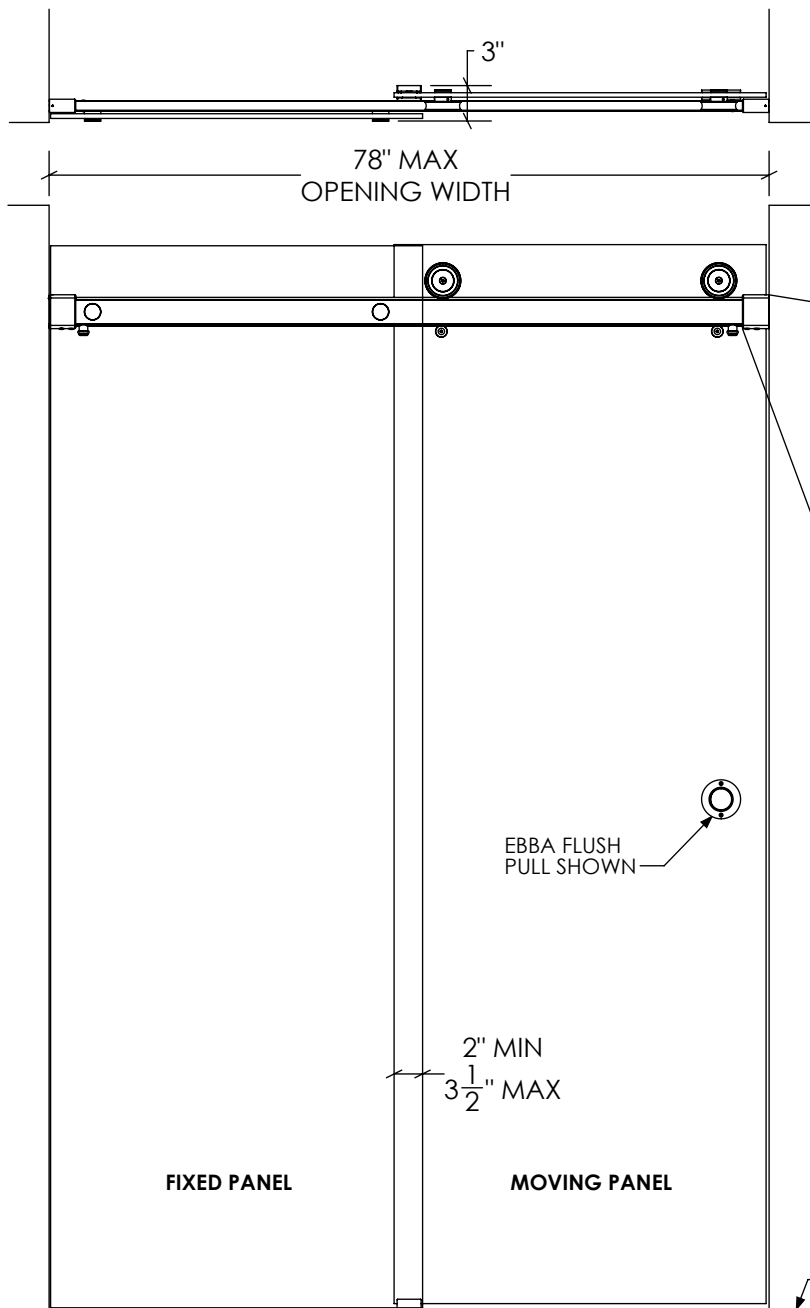
PRODUCT NAME RORIK FOR ALCOVE

DRAWING SCALE: 3/4" = 1'-0" (1:16)

PAGE: 1/3

DATE: 6/22/2017

Krownlab
2351 NW York St.
Portland, OR 97210
503-292-6998
www.krownlab.com
support@krownlab.com



SCALE 1 : 2

Product Features & Technical Specifications

- Industry leading 10 year warranty
- ADA compliant pull force at full system loading
- Configurable with 36" clear openings for roll in entry
- Supports moving panels weighing up to 150 lbs
- Maximum 40" unsupported track spans possible
- Tru-Leveling System™ for faster, perfect installations
 - Built-in ¼" total adjustment in all directions at each track mounting point
- Vertical panel adjustment
 - Adjust panel up to ⅛" even after installation
- Fully adjustable door stops for fast and easy control of door travel
- Available in Brushed Stainless and Black Stainless finishes
- Compatible with framed tiled walls
- Track ships standard at 78" length - contact Krownlab to inquire about longer lengths
- Easily cut and drill track in the field with commonly available tools
- For door panels ¼" to ½" in thickness*
- Comprehensive line of system add-ons at www.krownlab.com
- Full CAD available at www.krownlab.com/downloads

*Panels thinner than 3/8" require some hardware modification

SPEC SHEET

GLASS SPECIFICATION: RORIK MOVING AND FIXED PANEL FOR FLUSH PULL

DRAWING SCALE: 3/4" = 1'-0" (1:16)

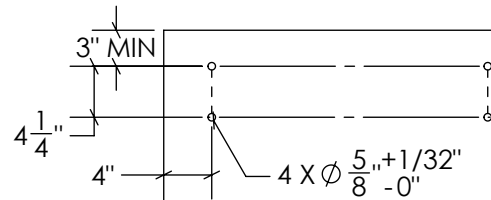
PAGE: 2/3

DATE: 6/22/2017

Krownlab
2351 NW York St.
Portland, OR 97210
503-292-6998
www.krownlab.com
support@krownlab.com

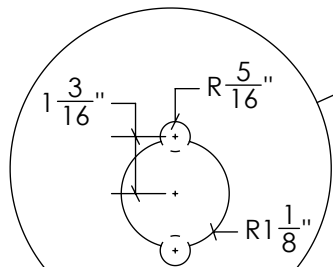


FLUSH PULL
INSTALLATIONS



- FINISH NOTES:**
- Flat polish and bevel all edges (1mm)
 - All holes must be drilled or CNC machined
 - Do not water jet - no tapered holes
 - Ebba Cut-out must be seamed
 - Reference ASTM C1048, 7.9.6.3 and ASTM C1048, 7.9.5

MOVING PANEL



SCALE 1 : 4

EBBA FLUSH PULL
CUTOUT PREPARATION
ALL DIMENSIONS IN
THIS VIEW ±1/32"

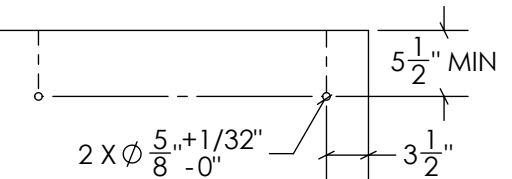
PER CUSTOMER
SPECIFICATION

TRACK CLEARANCE

H - 1/4"

H - 6 3/4"

H



FIXED PANEL

1/2 OPENING + 1" **

FLOOR

1/2 OPENING + 1" **

ALL TEMPERED GLASS IS SUBJECT TO EXPERIENCE SPONTANEOUS BREAKAGE. IT IS THE BUYER'S RESPONSIBILITY TO DETERMINE AND APPROVE GLASS SPECIFICATION(S) SUITABLE TO MEET ALL FACTORS RELEVANT TO THEIR PARTICULAR USE OR APPLICATION IN CONJUNCTION WITH ALL KROWN LAB, INC.'S PRODUCTS.

- Fixed panels can be 3/8" - 1/2"
- Moving panels can be *1/4" to 1/2"
- Max moving panel weight is 150lb

* Panels thinner than 3/8" require some hardware modification
**Results in 2" door overlap not accounting for necessary wall and floor clearance

SPEC SHEET

GLASS SPECIFICATION: RORIK MOVING AND FIXED PANEL FOR PROTRUDING PULL

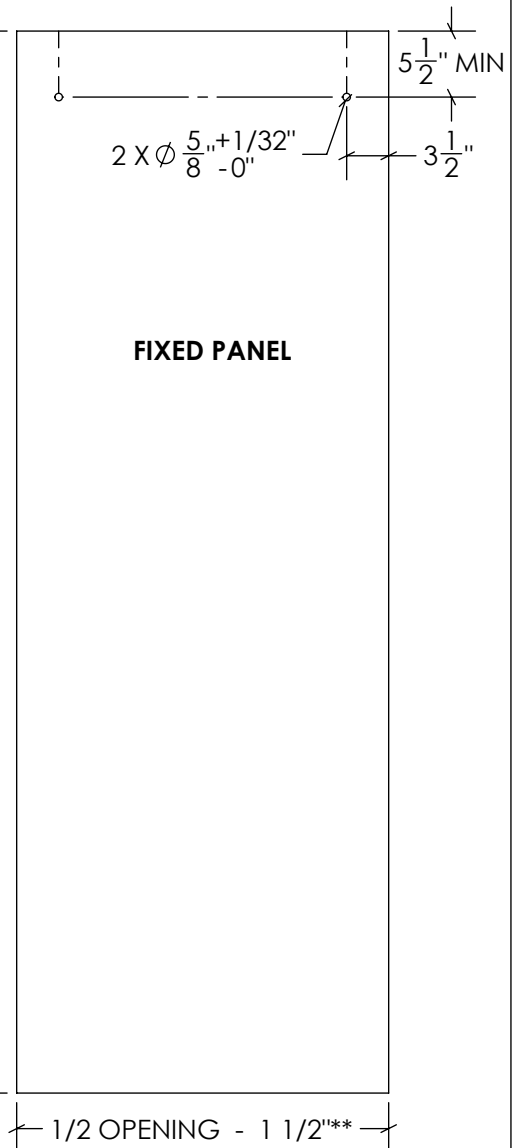
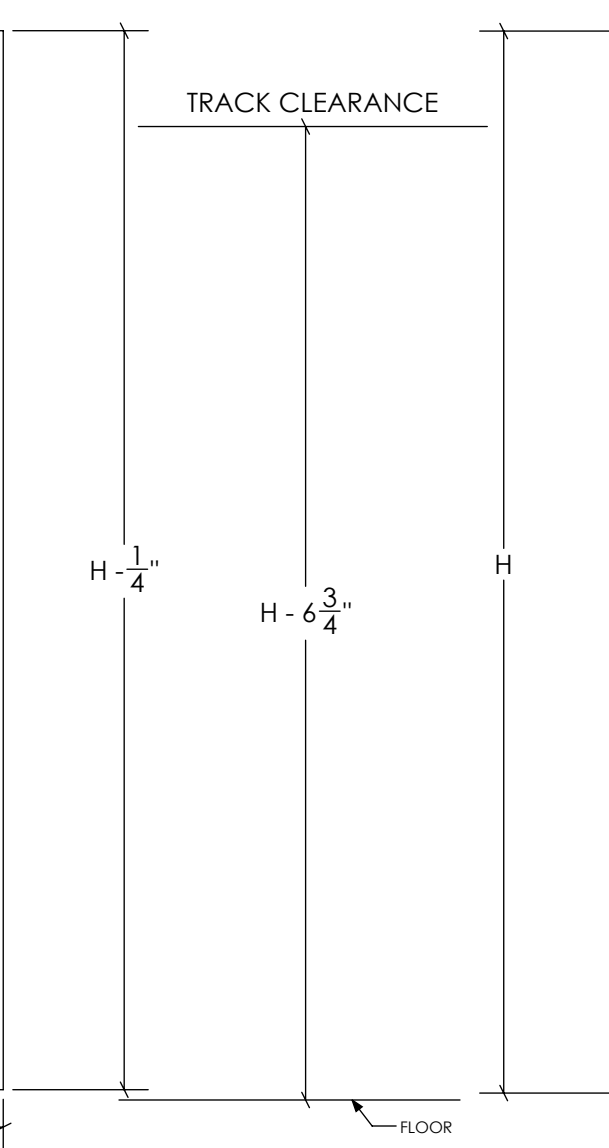
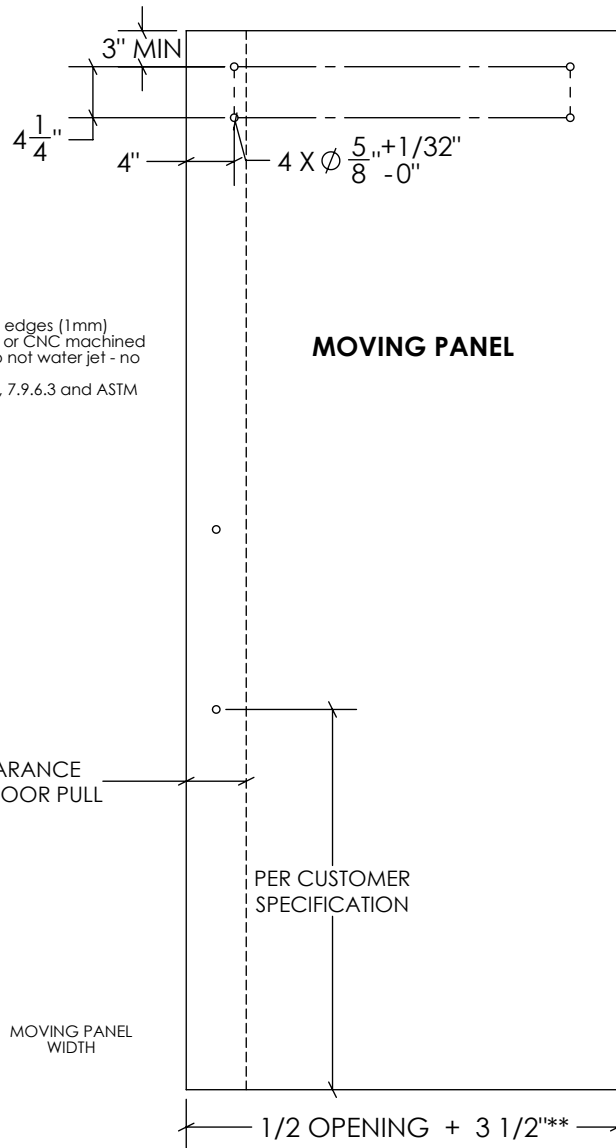
DRAWING SCALE: 3/4" = 1'-0" (1:16)

PAGE: 3/3

DATE: 6/22/2017

PROTRUDING PULL INSTALLATIONS

Krownlab
2351 NW York St.
Portland, OR 97210
503-292-6998
www.krownlab.com
support@krownlab.com



FINISH NOTES:

- Flat polish and bevel all edges (1mm)
- All holes must be drilled or CNC machined with seamed edges. Do not water jet - no tapered holes
- Reference ASTM C1048, 7.9.6.3 and ASTM C1048, 7.9.5

CLEAR OPENING = TOTAL OPENING - MOVING PANEL WIDTH

ALL TEMPERED GLASS IS SUBJECT TO EXPERIENCE SPONTANEOUS BREAKAGE. IT IS THE BUYER'S RESPONSIBILITY TO DETERMINE AND APPROVE GLASS SPECIFICATION(S) SUITABLE TO MEET ALL FACTORS RELEVANT TO THEIR PARTICULAR USE OR APPLICATION IN CONJUNCTION WITH ALL KROWN LAB, INC.'S PRODUCTS.

- Fixed panels can be 3/8" - 1/2"
- Moving panels can be *1/4" to 1/2"
- Max moving panel weight is 150lb

* Panels thinner than 3/8" require some hardware modification
**Results in 2" door overlap not accounting for necessary wall and floor clearance