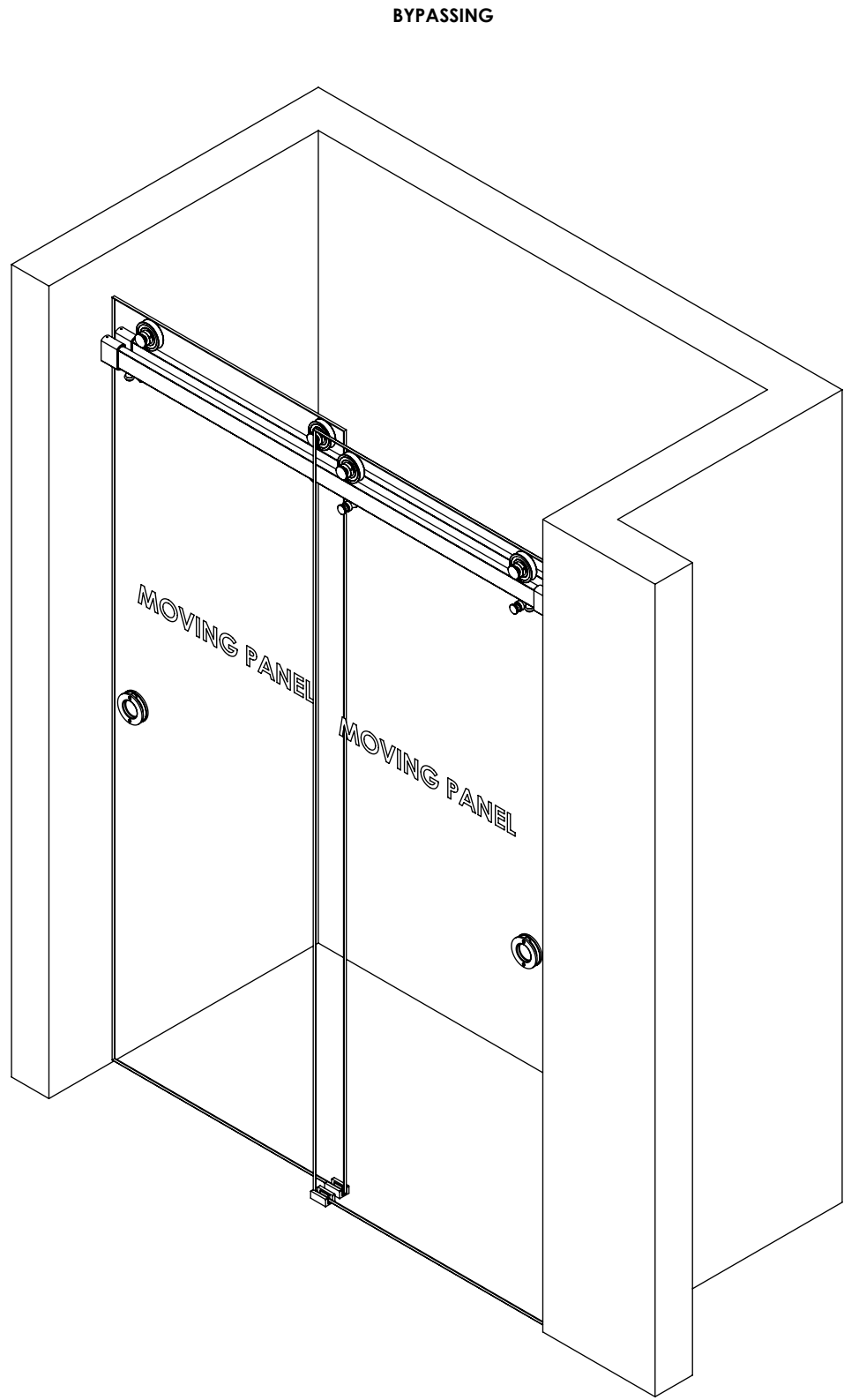
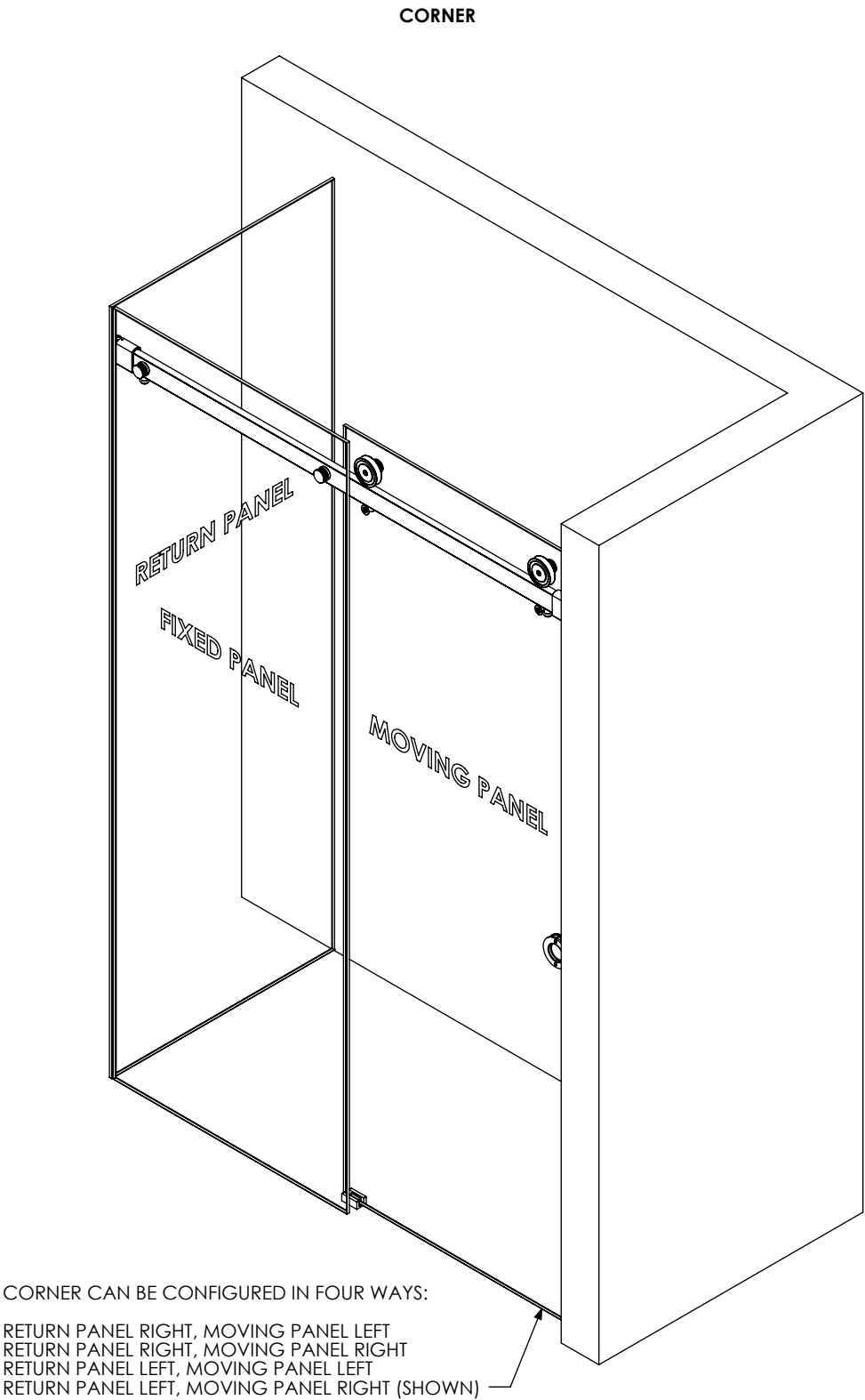
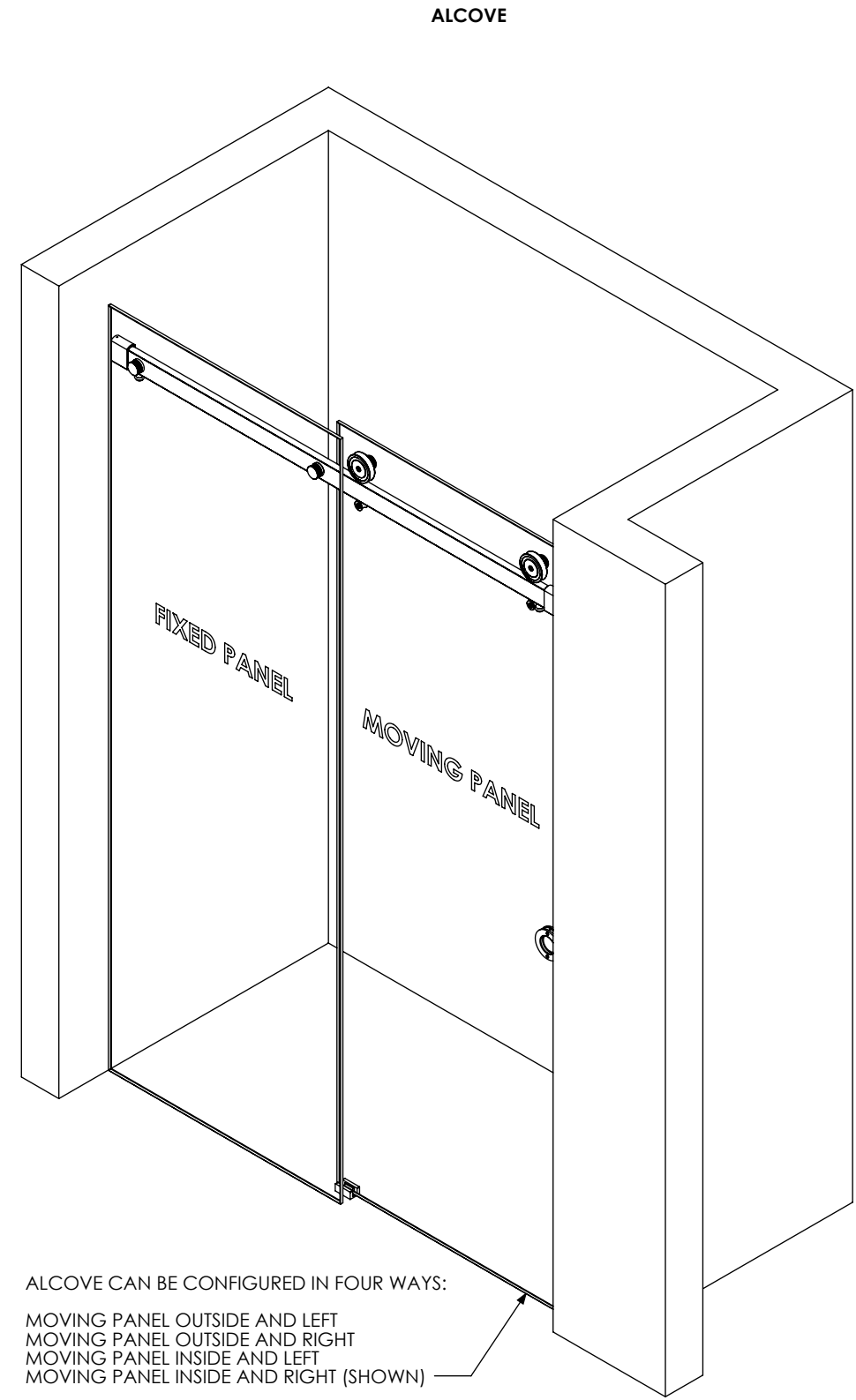
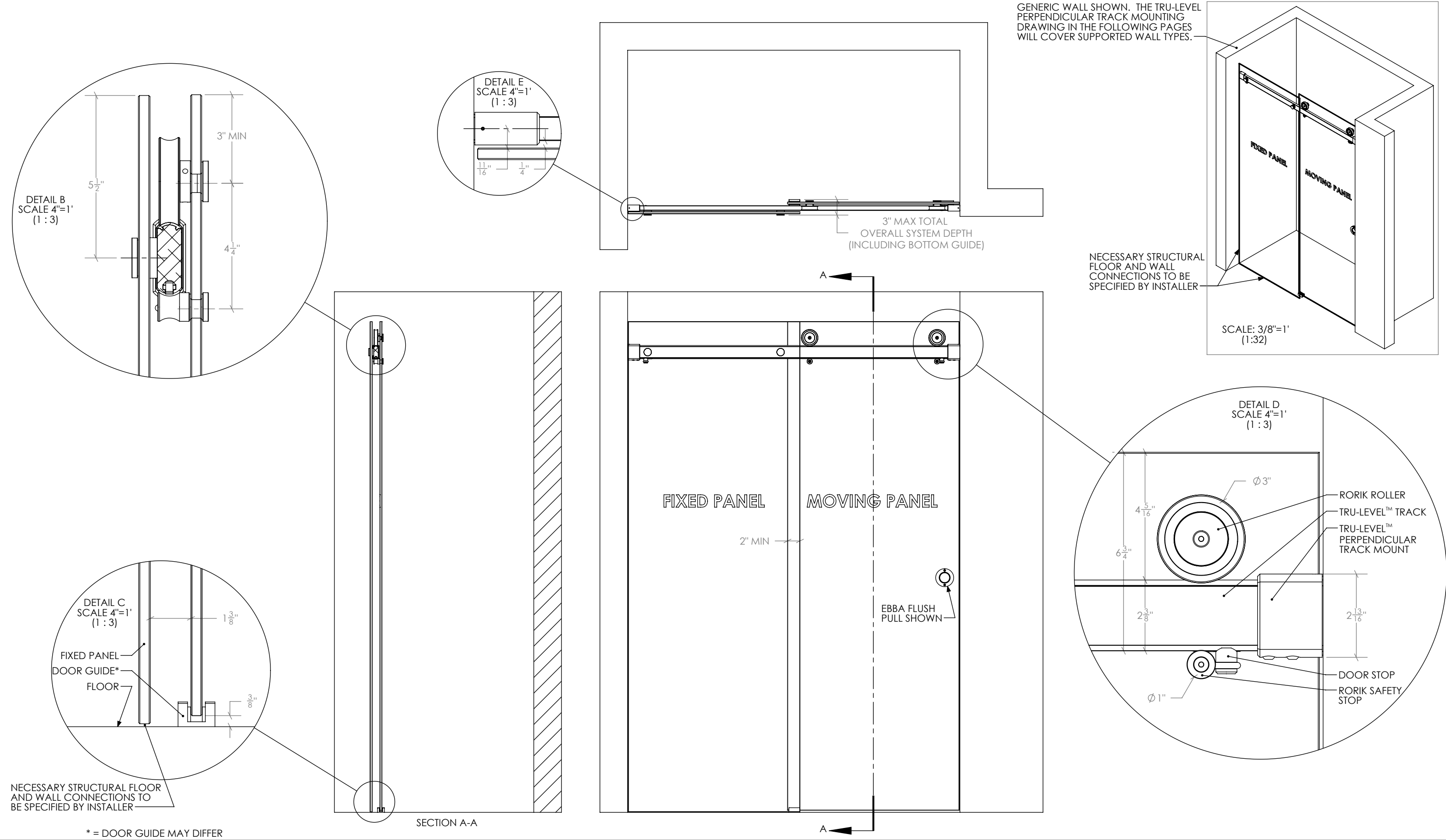


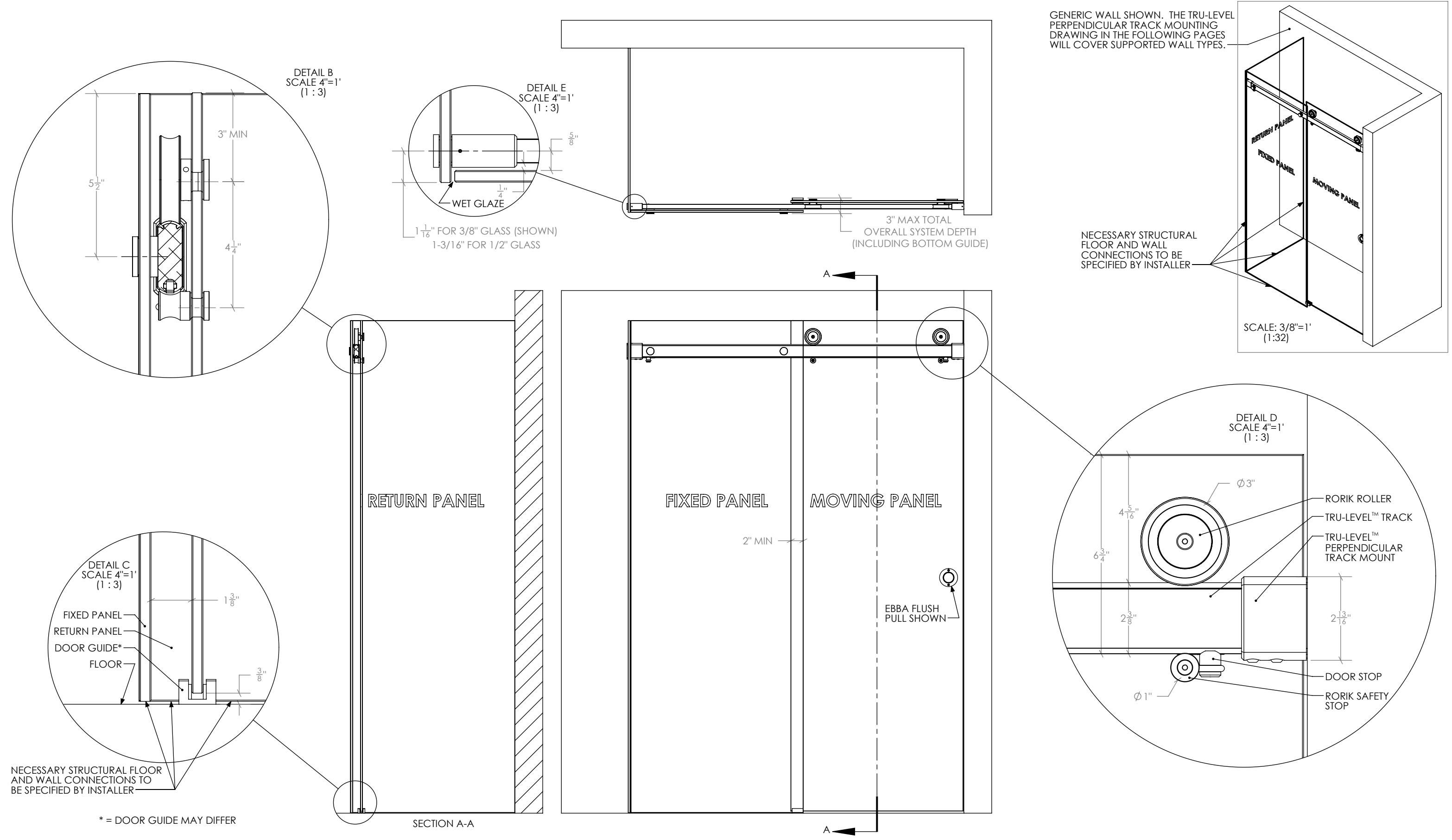
DOCUMENT:	PRODUCT SPECIFICATIONS - CONFIGURATIONS	DOOR APPLICATION:	ALCOVE, CORNER, BYPASSING	DRAWING SCALE:	3/4" = 1'-0" (1:16)	<div>KROWNLAB</div> <div>2351 NW York St.</div> <div>Portland, OR 97210</div> <div>+1 503 292 6998</div> <div>www.krownlab.com</div> <div>support@krownlab.com</div> <div><div>KROWNLAB</div><div>PDX · ORE</div></div>
SYSTEM:	RORIK	PANEL THICKNESS:	3/8" TO 1/2" (CONTACT US FOR PANELS OUTSIDE THIS RANGE)	UNITS:	INCHES	
MOUNTING STYLE:	GLASS	MAXIMUM WEIGHT:	TRACK CONFIGURATION DEPENENT	DATE:	12/28/2018	




DOCUMENT:	PRODUCT SPECIFICATIONS	DOOR APPLICATION:	ALCOVE	DRAWING SCALE:	3/4" = 1'-0" (1:16)	<div>KROWNLAB</div> <div>2351 NW York St.</div> <div>Portland, OR 97210</div> <div>+1 503 292 6998</div> <div>www.krownlab.com</div> <div>support@krownlab.com</div> <div><div>KROWNLAB</div><div>PDX · ORE</div></div>
SYSTEM:	RORIK	PANEL THICKNESS:	3/8" TO 1/2" (CONTACT US FOR PANELS OUTSIDE THIS RANGE)	UNITS:	INCHES	
MOUNTING STYLE:	GLASS	MAXIMUM WEIGHT:	150LBS (CONTACT US FOR HEAVIER PANELS)	DATE:	12/26/2018	

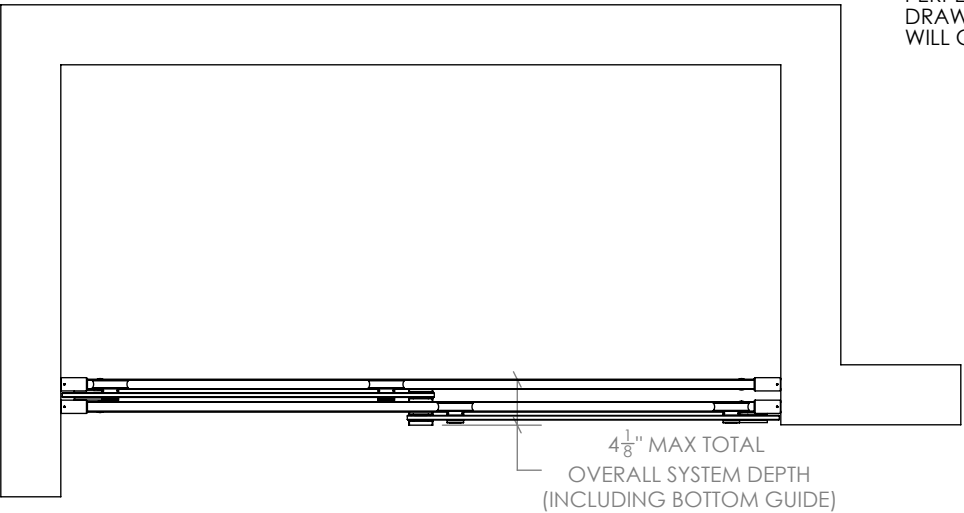
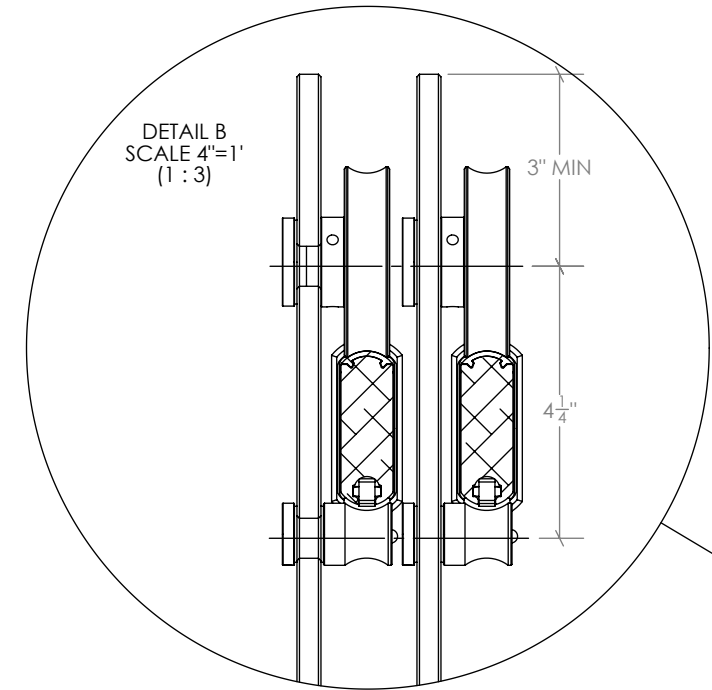


DOCUMENT:	PRODUCT SPECIFICATIONS	DOOR APPLICATION:	CORNER	DRAWING SCALE:	3/4" = 1'-0" (1:16)	<div>KROWNLAB</div> <div>2351 NW York St.</div> <div>Portland, OR 97210</div> <div>+1 503 292 6998</div> <div>www.krownlab.com</div> <div>support@krownlab.com</div> <div><div><div></div></div><div>KROWNLAB®</div><div>PDX · ORE</div></div>
SYSTEM:	RORIK	PANEL THICKNESS:	3/8" TO 1/2" (CONTACT US FOR PANELS OUTSIDE THIS RANGE)	UNITS:	INCHES	
MOUNTING STYLE:	GLASS	MAXIMUM WEIGHT:	150LBS (CONTACT US FOR HEAVIER PANELS)	DATE:	12/26/2018	

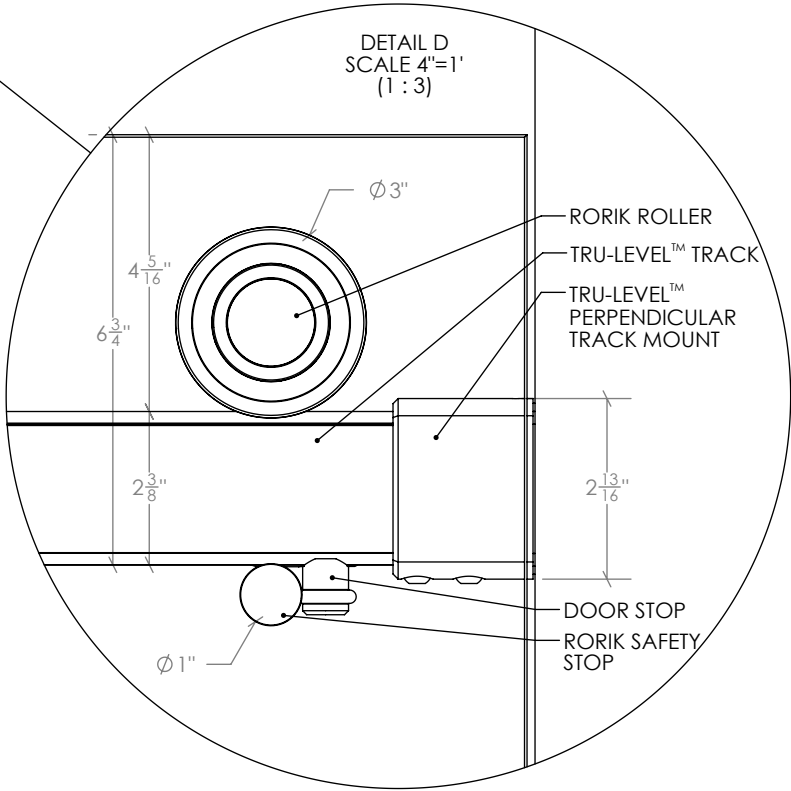
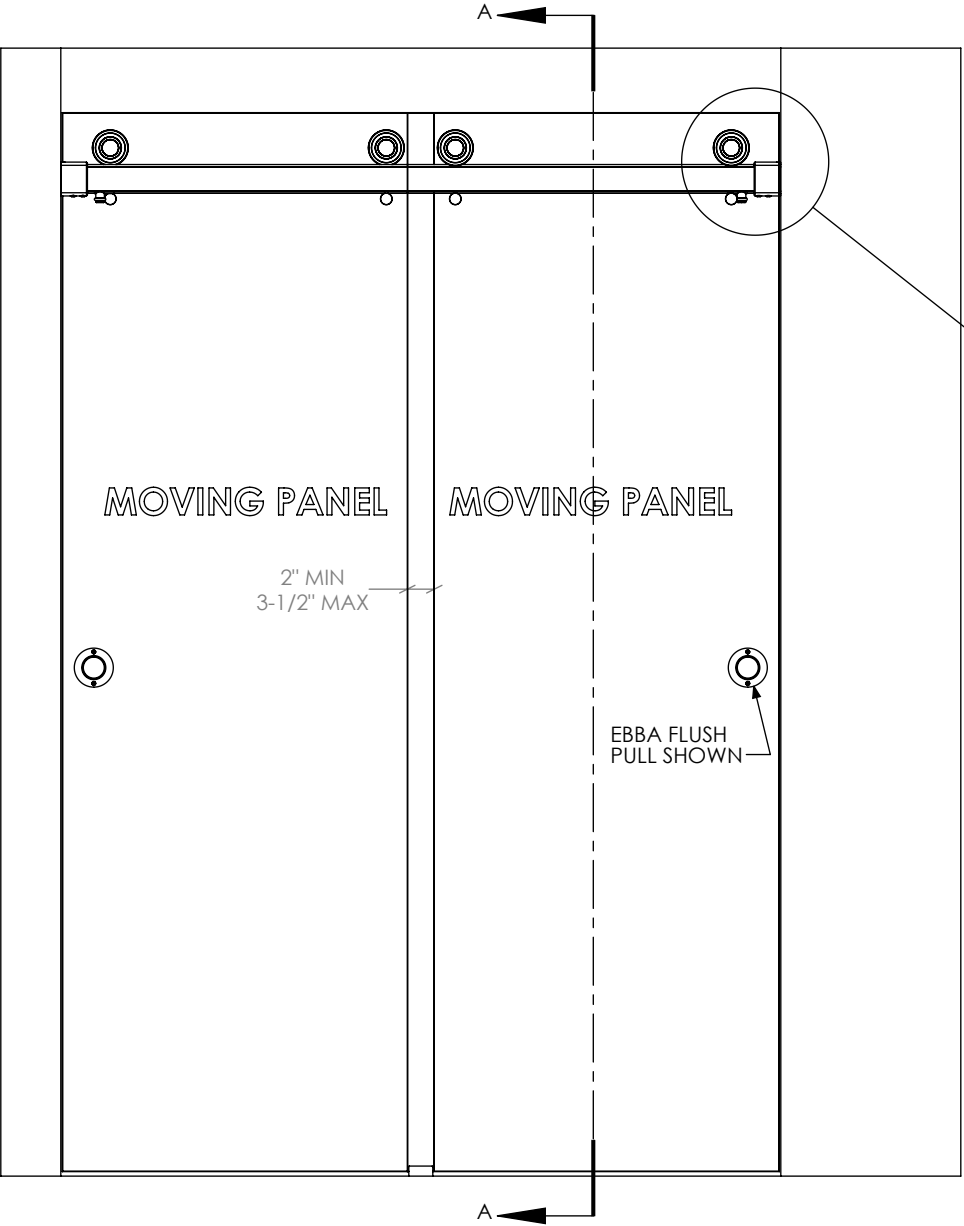
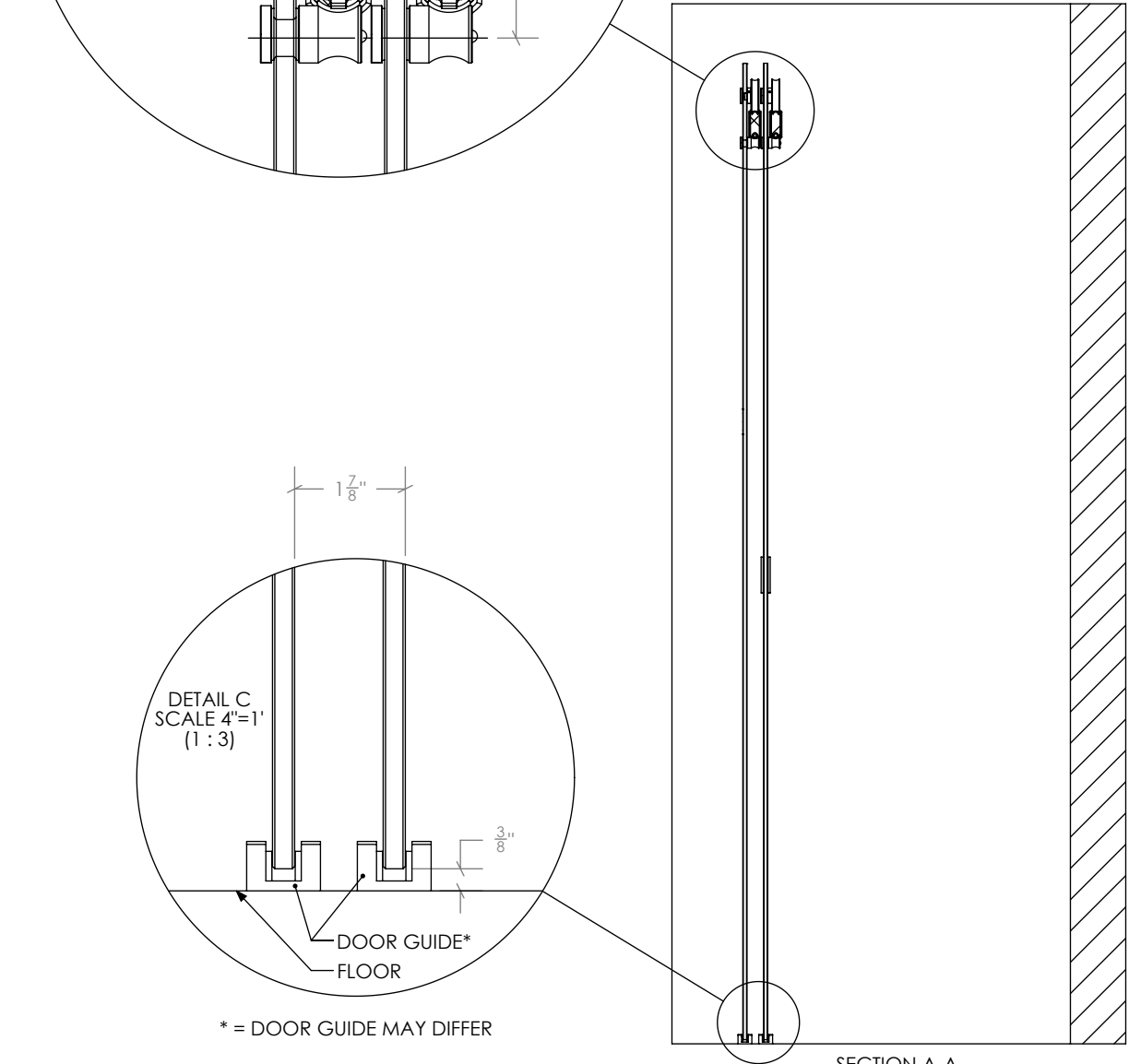
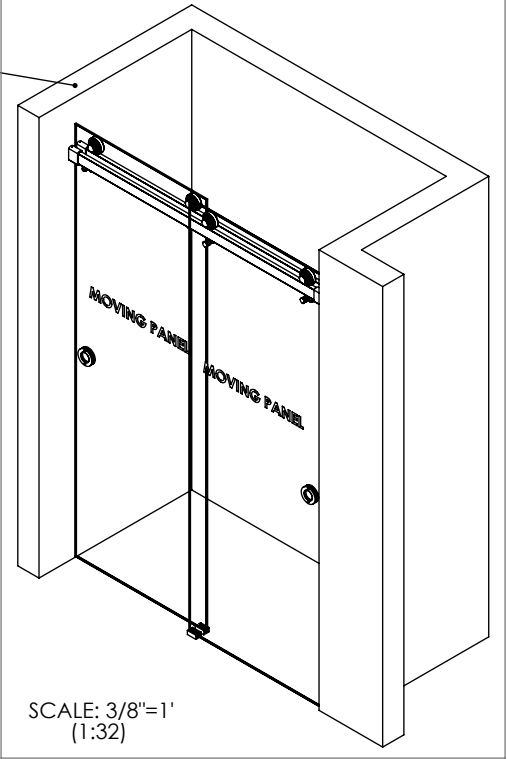


DOCUMENT:	PRODUCT SPECIFICATIONS	DOOR APPLICATION:	BYPASSING	DRAWING SCALE:	3/4" = 1'-0" (1:16)	<div>KROWNLAB 2351 NW York St. Portland, OR 97210 +1 503 292 6998 www.krownlab.com support@krownlab.com</div> <div>KROWNLAB® PDX · ORE</div>
SYSTEM:	RORIK	PANEL THICKNESS:	3/8" TO 1/2" (CONTACT US FOR PANELS OUTSIDE THIS RANGE)	UNITS:	INCHES	
MOUNTING STYLE:	GLASS	MAXIMUM WEIGHT:	TRACK LENGTH DEPENDENT (SEE TABLE BELOW)	DATE:	12/26/2018	

TRACK SPAN	MAX. PANEL WEIGHT
60"	125lb
72"	100lb

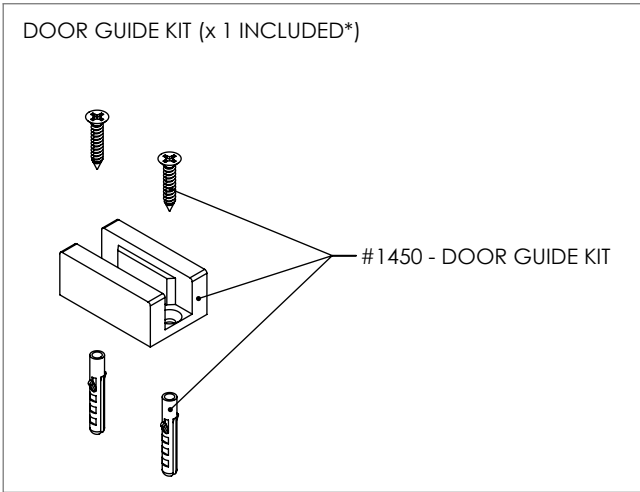
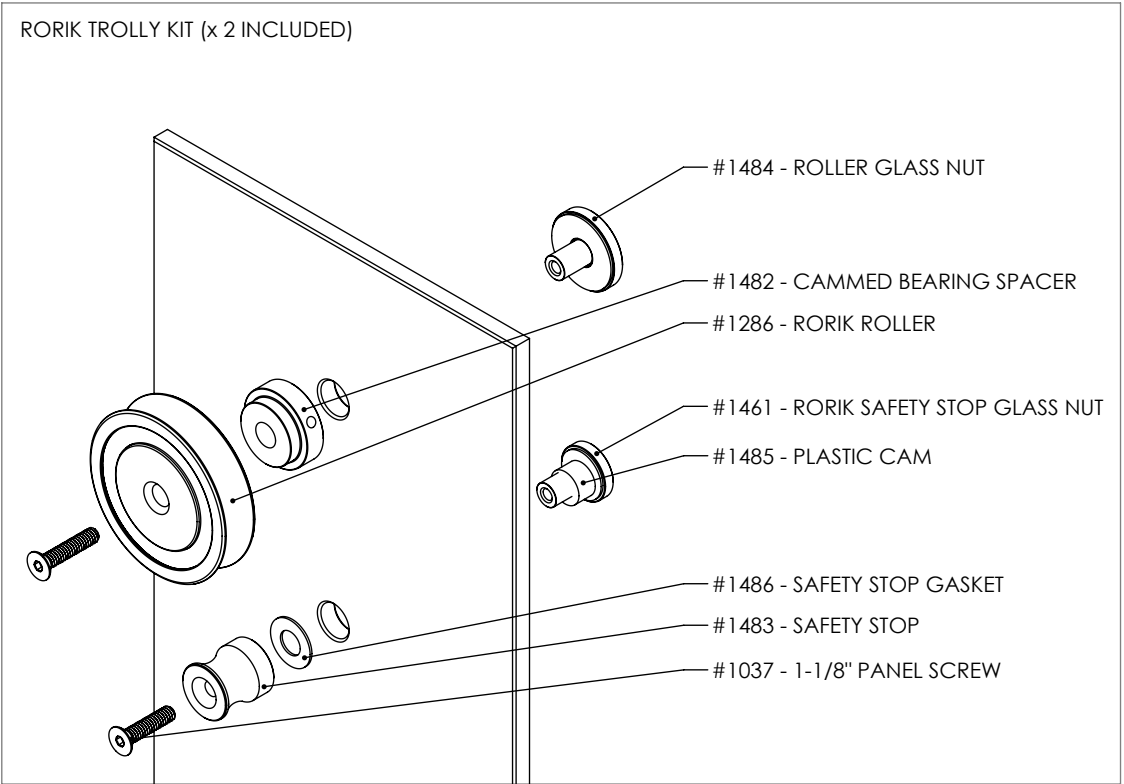
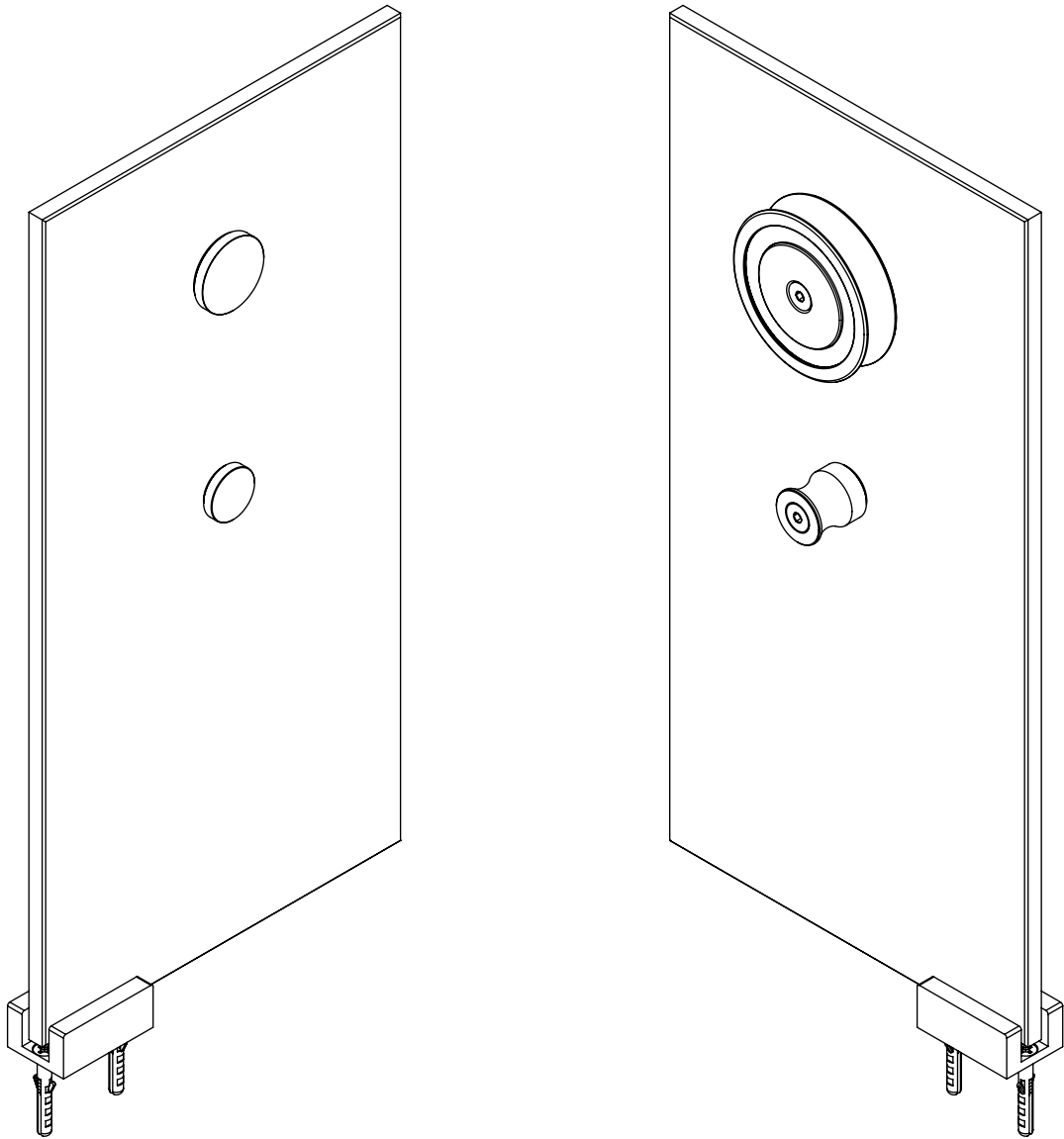


GENERIC WALL SHOWN. THE TRU-LEVEL PERPENDICULAR TRACK MOUNTING DRAWING IN THE FOLLOWING PAGES WILL COVER SUPPORTED WALL TYPES.



DOCUMENT:	PRODUCT SPECIFICATIONS	DOOR APPLICATION:	ALCOVE, CORNER, BYPASSING	DRAWING SCALE:	3/4" = 1'-0" (1:3)	<div>KROWNLAB</div> <div>2351 NW York St.</div> <div>Portland, OR 97210</div> <div>+1 503 292 6998</div> <div>www.krownlab.com</div> <div>support@krownlab.com</div> <div><div><div></div></div><div>KROWNLAB®</div><div>PDX - ORE</div></div>
SYSTEM:	RORIK	PANEL THICKNESS:	3/8" TO 1/2" (CONTACT US FOR PANELS OUTSIDE THIS RANGE)	UNITS:	INCHES	
MOUNTING STYLE:	GLASS	MAXIMUM WEIGHT:	TRACK CONFIGURATION DEPENENT	DATE:	12/28/2018	

WHAT'S INCLUDED PER DOOR PANEL:
2 x - RORIK GLASS MOUNT TROLLEY KIT
1 x - DOOR GUIDE KIT (DOOR GUIDE MAY DIFFER - MULTIPLE OPTIONS EXIST)
1 x - TRU-LEVEL™ TRACK SYSTEM WITH ALL MOUNTING HARDWARE (SEE SEPARATE PAGE)



* = THE DOOR GUIDE MAY DIFFER - MULTIPLE OPTIONS EXIST

DOCUMENT:	PRODUCT SPECIFICATIONS	DOOR APPLICATION:	ALL	DRAWING SCALE:	6" = 1'-0" (1:2)	<div>KROWNLAB</div> <div>2351 NW York St.</div> <div>Portland, OR 97210</div> <div>+1 503 292 6998</div> <div>www.krownlab.com</div> <div>support@krownlab.com</div> <div><div><div>KROWNLAB</div><div>PDX - ORE</div></div></div>
SYSTEM:	TRU-LEVEL™ TRACK	PANEL THICKNESS:	3/8" TO 1/2" (CONTACT US FOR PANELS OUTSIDE OF THIS RANGE)	UNITS:	INCHES	
MOUNTING STYLE:	GLASS WALL	MAXIMUM WEIGHT:	TROLLEY SYSTEM DEPENDENT	DATE:	12/28/2018	

WHAT'S INCLUDED:
1 x - #Txxxx - TRU-LEVEL™ TRACK SYSTEM WITH ALL MOUNTING HARDWARE:
X x - #A257 - STANDARD GLASS TRACK MOUNTING KIT
2 x - #A214 - DOOR STOP KIT
X x - #A213 - TRACK CONNECTOR KIT (1 x PER TRACK JOINT INLCUED)

#A214 - DOOR STOP KIT (x 2 INCLUDED*)

#1365 - DOOR STOP NUT (NOT SHOWN)

#1339 - DOOR STOP

#1364 - DOOR STOP SCREW

* = THE DOOR STOP MAY DIFFER - MULTIPLE OPTIONS EXIST
VISIT WWW.KROWNLAB.COM FOR ALL OPTIONS

#A217 - TRACK SHIM KIT (NOT INCLUDED)

#1417 - TRACK SHIM (THICK)

#1416 - TRACK SHIM (THIN, 2x)

TRACK SHIMS ARE DESIGNED TO BE INSTALLED AGAINST TRACK

#A213 - TRACK CONNECTOR KIT
(1 x PER TRACK JOINT INLCUED)

#1382 - CONNECTOR SCREW

#1297-B - TRACK CONNECTOR WASHER PLATE

#1383 - TRACK CONNECTOR NUT

#Txxxx - TRU-LEVEL™ TRACK SYSTEM

#A257 - STANDARD GLASS TRACK MOUNT KIT (QUANTITY MATCHES THE TRACK DRILL PATTERN)

#1399 - TRACK GLASS NUT

#1428 - GLASS BUSHING

#1414 - 1/4" TRACK STANDOFF

#1415 - 3/4" OPTIONAL TRACK STANDOFF**

#1297-A - TRACK WASHER PLATE

#1388 - 7/8" TRACK MACHINE SCREW**

#1389 - 1" TRACK MACHINE SCREW**

#1424 - 1-3/8" TRACK MACHINE SCREW**

#1425 - 1-1/2" TRACK MACHINE SCREW**

#1426 - 1-5/8" TRACK MACHINE SCREW**

#1427 - 1-3/4" TRACK MACHINE SCREW**

#1609 - 7/8" TRACK MACHINE SCREW***

#1610 - 1" TRACK MACHINE SCREW***

TRACK CAP (SYSTEM DEPENDENT)

#1338 - END CAP**

#1496 - END CAP***

#1118 - END CAP SCREW


#1317 - TRACK SPRING

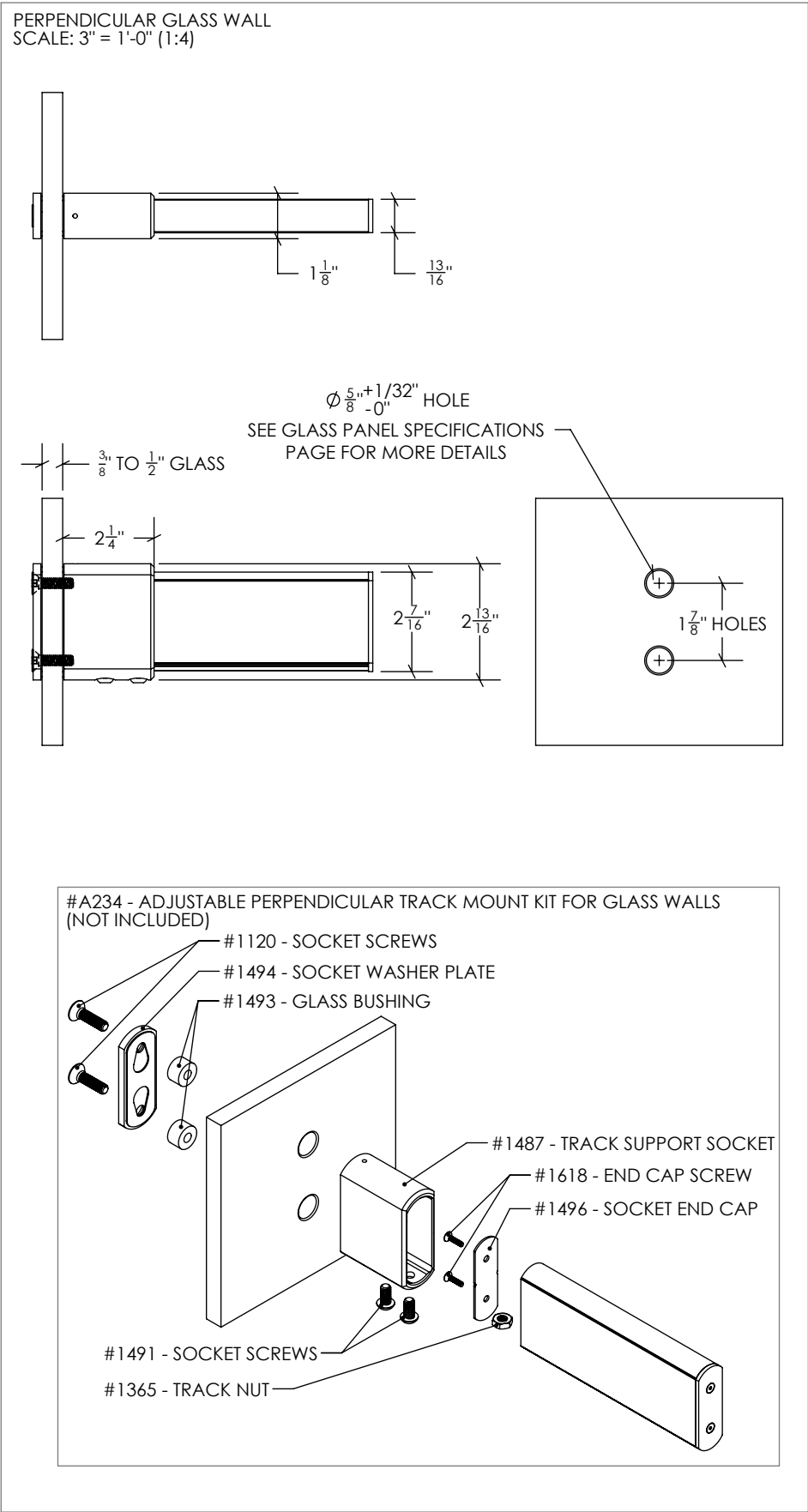
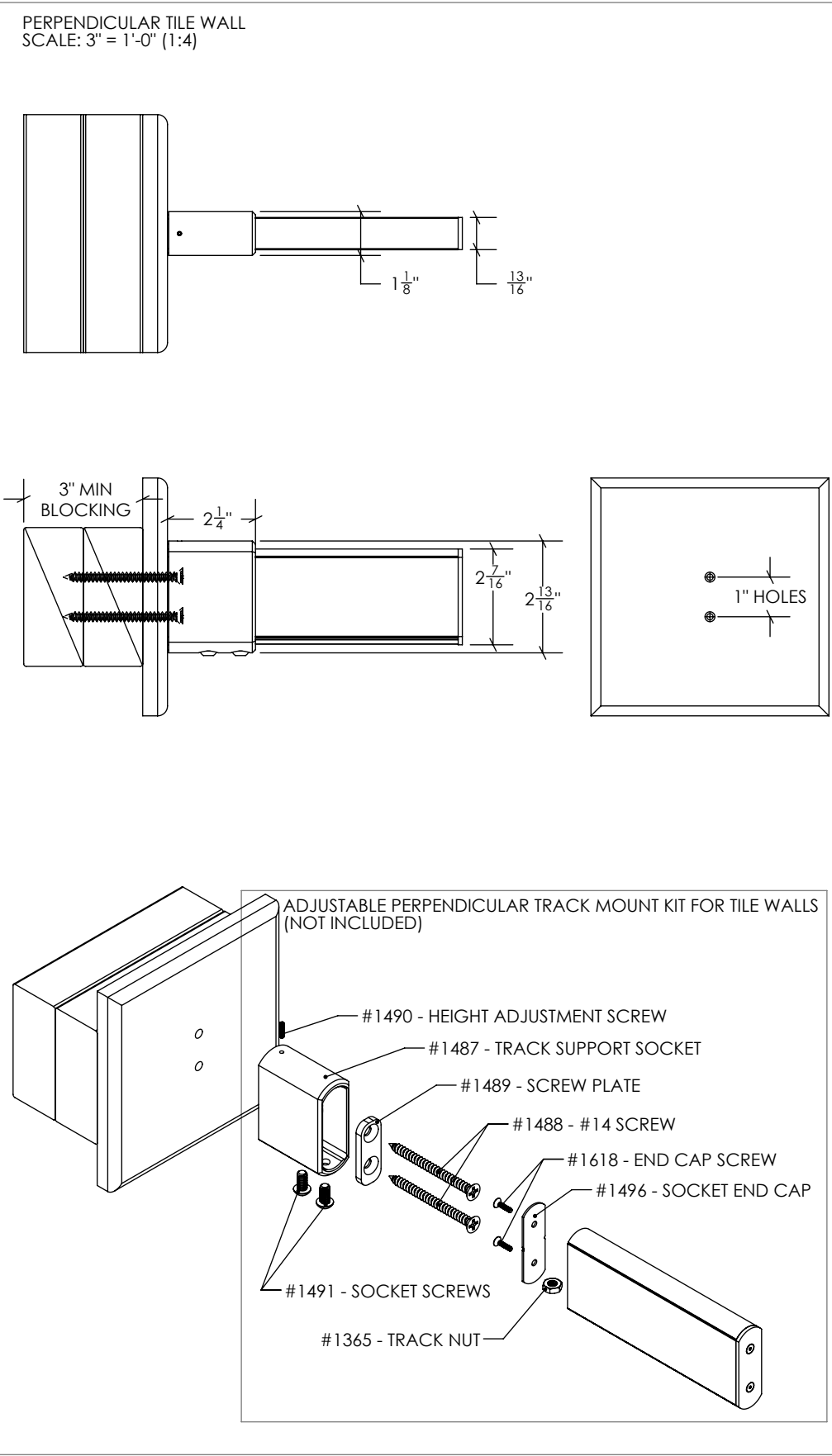
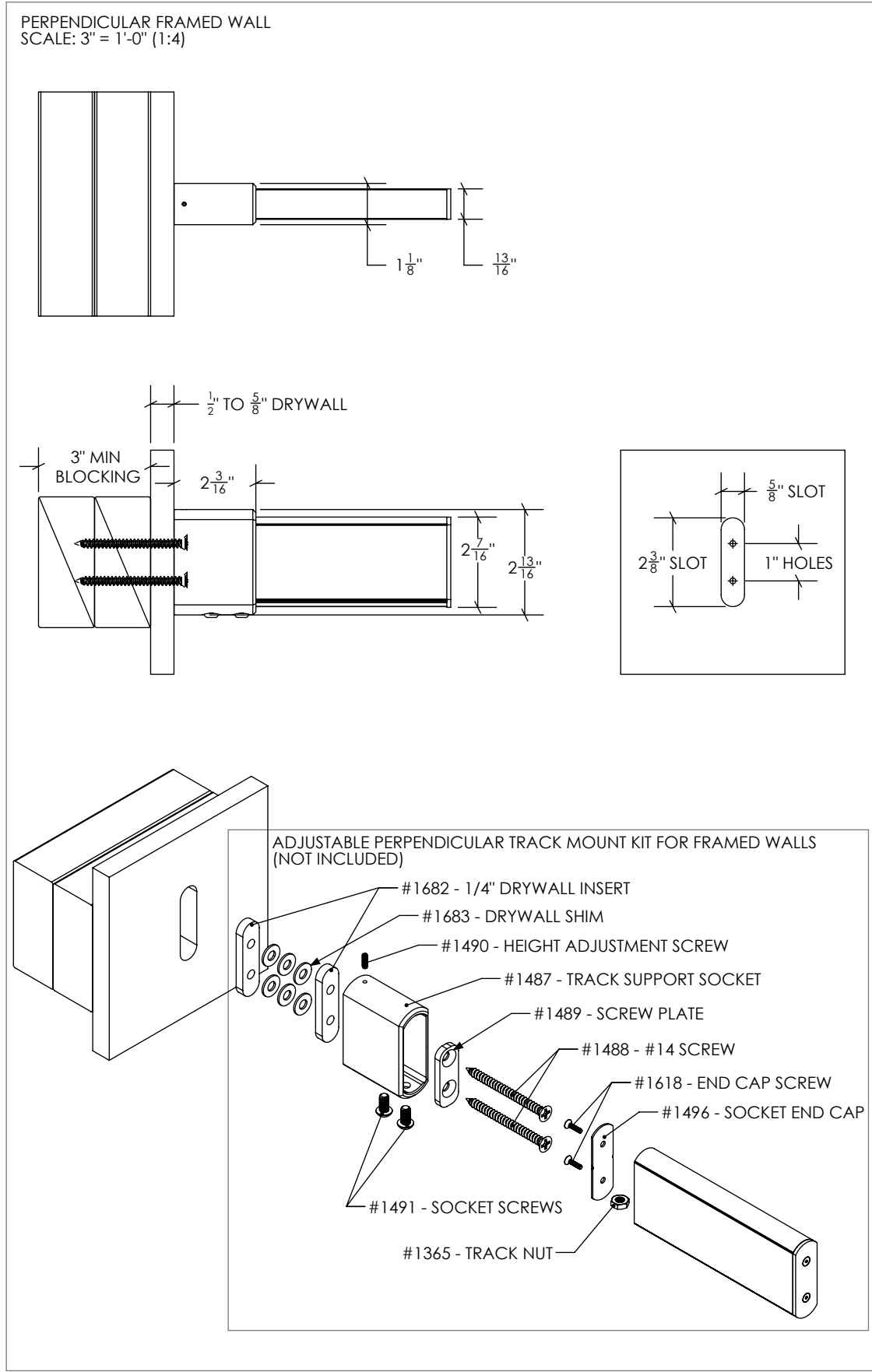
TRACK BASE

TRACK COVER

** = INCLUDED WITH LOKI, ODEN AND BALDUR ONLY
*** = INCLUDED WITH RORIK ONLY

ALL INFORMATION CONTAINED IN THIS DOCUMENT IS THE PROPERTY OF KROWNLAB. ANY REPRODUCTION IN WHOLE OR IN PART IS PROHIBITED WITHOUT PRIOR WRITTEN CONSENT.
KROWNLAB AND THE KROWNLAB LOGO ARE REGISTERED TRADEMARKS OF KROWN LAB, INC.

DOCUMENT:	PRODUCT SPECIFICATIONS - PERPENDICULAR TRACK MOUNTING POINT	DOOR APPLICATION:	ALL	DRAWING SCALE:	3/4" = 1'-0" (1:16)	KROWNLAB 2351 NW York St. Portland, OR 97210 +1 503 292 6998 www.krownlab.com support@krownlab.com	
SYSTEM:	TRU-LEVEL™ TRACK	PANEL THICKNESS:	3/8" TO 1/2" (CONTACT US FOR PANELS OUTSIDE OF THIS RANGE)	UNITS:	INCHES		
MOUNTING STYLE:	FRAMED WALL, TILED WALL, GLASS WALL	MAXIMUM WEIGHT:	TROLLEY SYSTEM OR TRACK CONFIGURATION DEPENDENT	DATE:	12/28/2018		



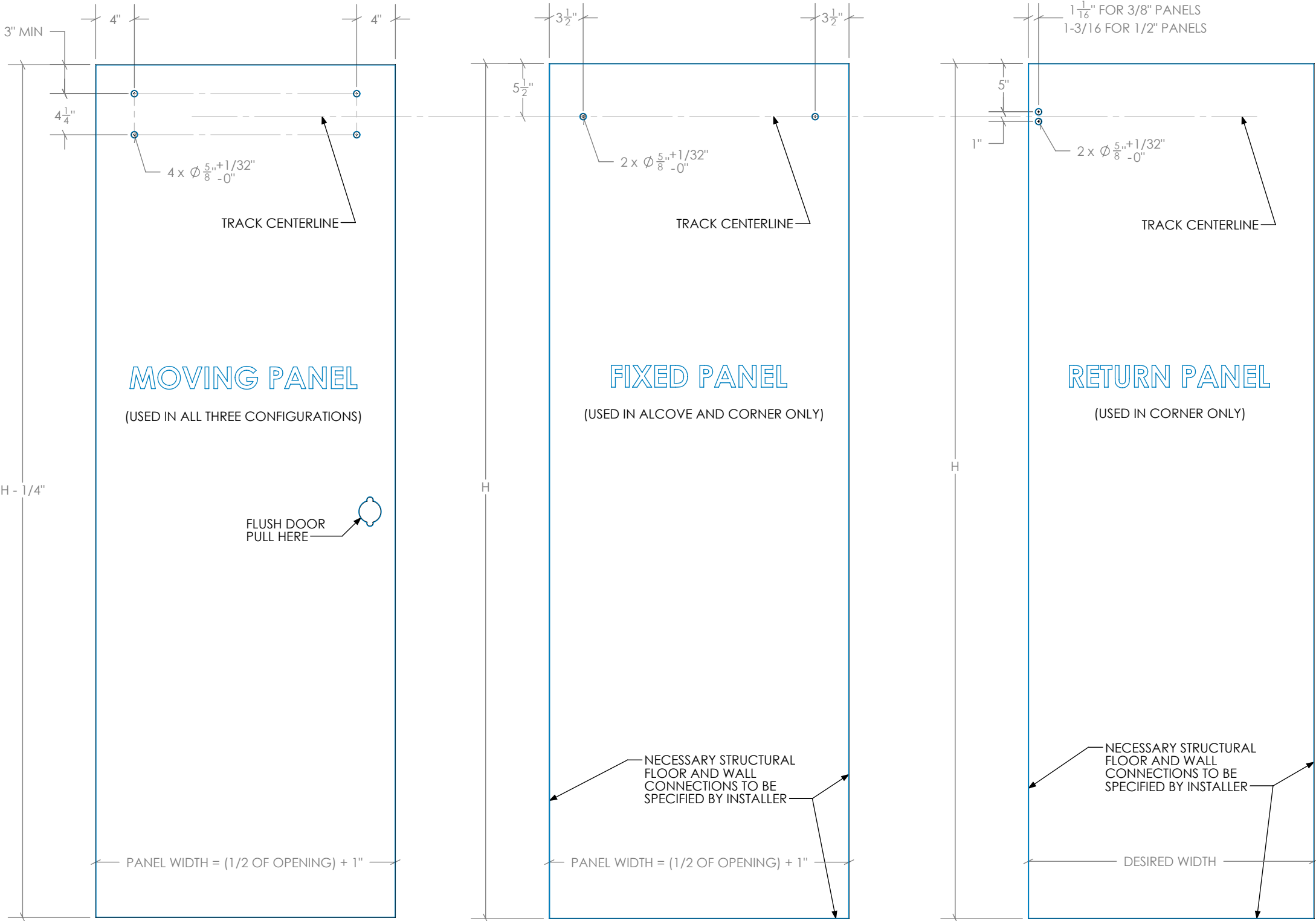
DOCUMENT:	PRODUCT SPECIFICATIONS - GLASS DOOR PANEL SPECIFICATIONS	DOOR APPLICATION:	ALCOVE, CORNER, BYPASSING	DRAWING SCALE:	3/4" = 1'-0" (1:12)	<div>KROWNLAB</div> <div>2351 NW York St.</div> <div>Portland, OR 97210</div> <div>+1 503 292 6998</div> <div>www.krownlab.com</div> <div>support@krownlab.com</div> <div><div>KROWNLAB</div><div>PDX · ORE</div></div>
SYSTEM:	RORIK	PANEL THICKNESS:	3/8" TO 1/2" (CONTACT US FOR PANELS OUTSIDE THIS RANGE)	UNITS:	INCHES	
MOUNTING STYLE:	GLASS	MAXIMUM WEIGHT:	TRACK CONFIGURATION DEPENENT	DATE:	12/28/2018	

GLASS PANELS MUST BE FLAT POLISHED AND HAVE A 1MM CHAMFER ON ALL EDGES.

ALL HOLES MUST BE DRILLED OR CNC MACHINED WITH STRAIGHT WALLS AND SEAMED EDGES. DO NOT WATER-JET - NO TAPERED HOLES.

ALL TEMPERED GLASS IS SUBJECT TO EXPERIENCE SPONTANIOUS BREAKAGE. IT IS THE BUYERS RESPONSIBILITY TO DETERMINE AND APPROVE GLASS SPECIFICATION(S) SUITABLE TO MEET ALL FACTORS RELEVANT TO THEIR PARTICULAR USE OR APPLICATION IN CONJUNCTION WITH ALL KROWN LAB, INC.'S PRODUCTS.

REFERENCE ASTM C1048, 7.9.5



WIDTH PROPORTIONS BASED ON FLUSH DOOR PULLS. PROTRUDING DOOR PULLS ARE NOT COMPATIBLE WITH BYPASSING AND REQUIRE SPECIAL CONSIDERATION.

THE PANEL WIDTH FORMULA CREATES A 2" OVERLAP, NOT ACCOUNTING FOR NECESSARY WALL AND PANEL CLEARANCES.