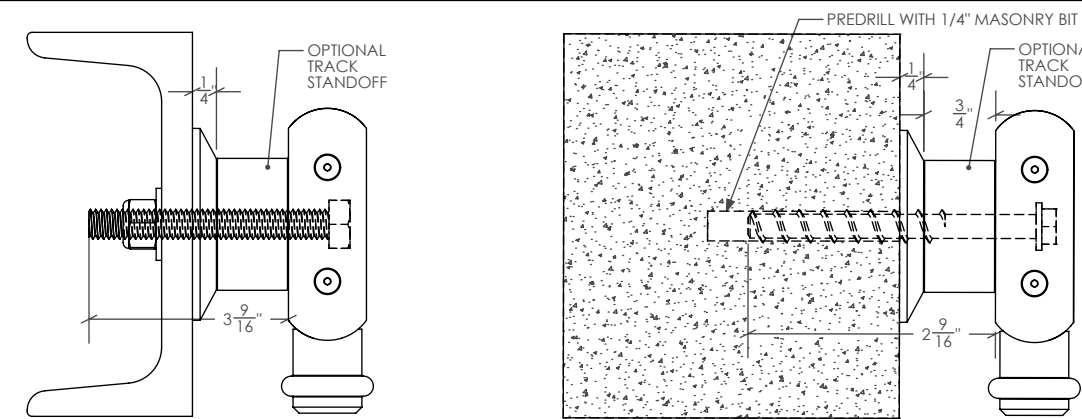


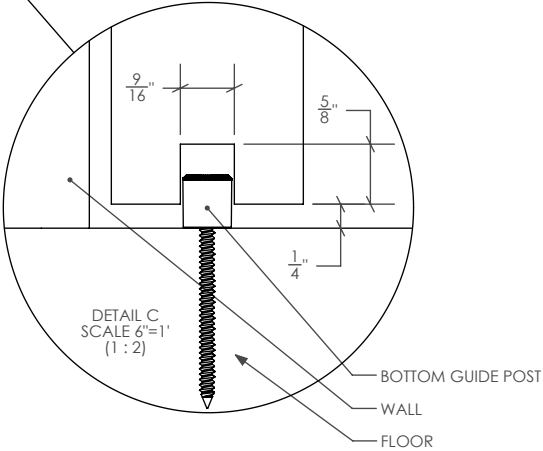
**Framed Walls**  
Wood or metal stud framed walls must have 3" of solid wood blocking secured to studs or other framing members. Framed wall kits include 5/16" x 4-1/2" lag bolts.



**Steel Beams**  
Steel beams must be structural in nature and have a minimum wall thickness of 1/4". Note that you cannot attach this hardware to sheet metal studs. Steel kits include 5/16"-18 x 4" bolts.

**Concrete Walls**  
Concrete and masonry walls must be solid and thicker than the minimum required thread engagement of 1-1/2". Concrete kits include 5/16" x 3" screw-in anchors.

SCALE 6"=1' (1 : 2)



**Product Features & Technical Specifications**

- Industry leading 10 year warranty
- ADA compliant pull force at full system loading
- Supports panels weighing up to 400 lbs in all configurations
- Tru-Leveling System™ for faster, perfect installations
  - Built-in 1/4" adjustment in all directions at each track mounting point
- Adjust wall-to-track distance from 1/4" to 1"
  - Shim kits available for further adjustment and uneven walls
- Vertical panel adjustment
  - Adjust panel up to 1/4" even after installation
- Fully adjustable door stops
  - Allows for fast and easy control of door travel during installation and after
- Available in Brushed Stainless and Black Stainless finishes
- Compatible with framed walls, concrete walls, metal beams, and glass walls
  - Perpendicular wall fitting accessory available
- Track available up to 13 ft in length:
  - Pre-cut to length in 1 ft increments, un-drilled
  - Pre-cut to length in 1 ft increments, pre-drilled with standard hole pattern
  - Made-to-measure, cut and drilled to your specifications
- Seamlessly connect multiple tracks with track connector
- Easily cut and drill track in the field with commonly available tools
- For door panels 3/4" to 2" in thickness
- Comprehensive line of system add-ons at [www.krownlab.com](http://www.krownlab.com)
- Full CAD available at [www.krownlab.com/downloads](http://www.krownlab.com/downloads)

