

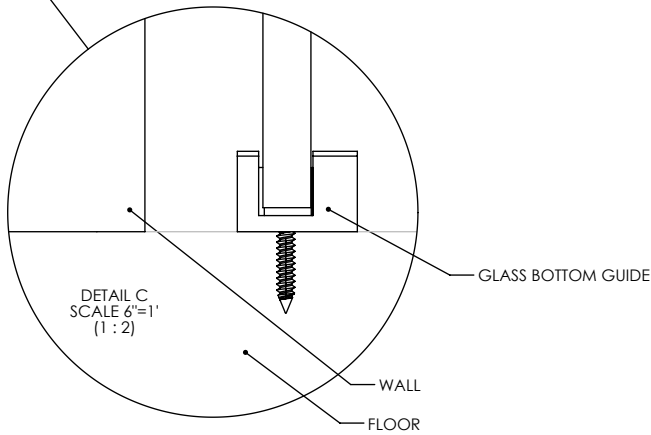
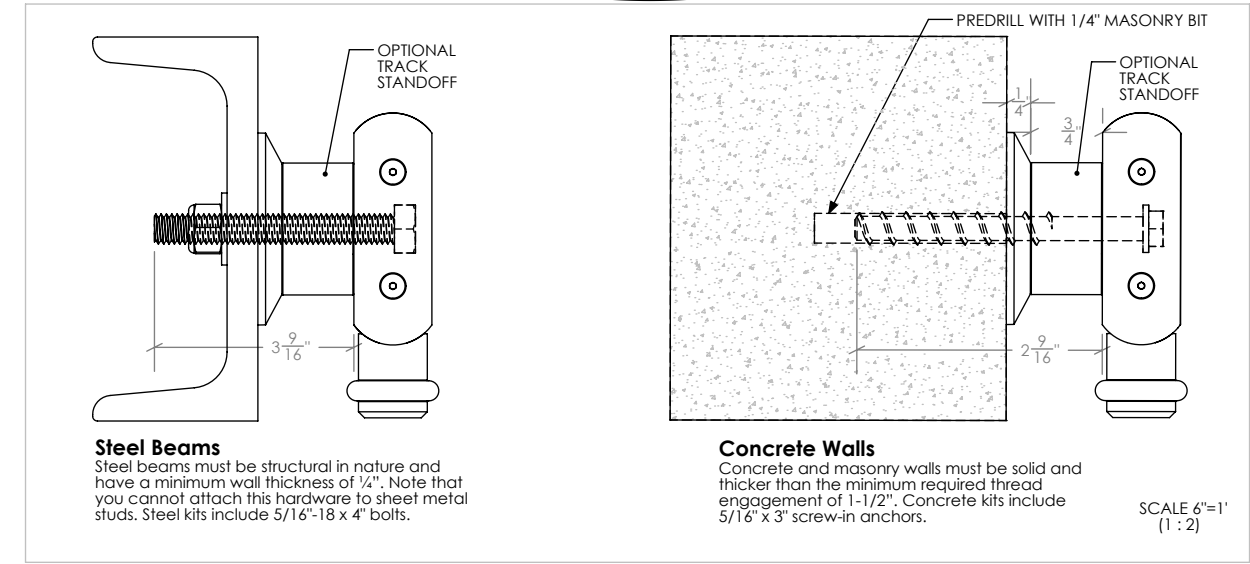
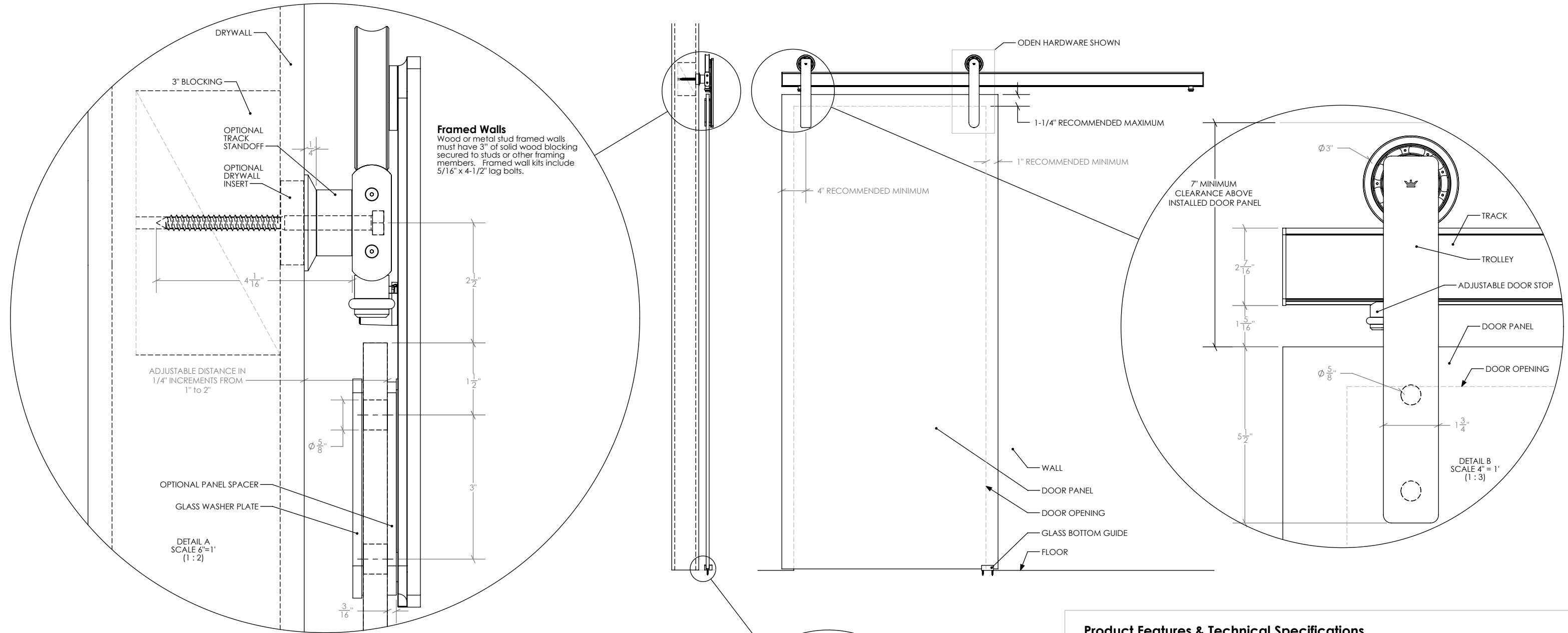
SPEC SHEET

PRODUCT NAME: RAGNAR & ODEN MOUNTING STYLE: GLASS MOUNT

DRAWING SCALE: 3/4" = 1'-0" (1:16) PAGE: 1/2 DATE: 8/19/2016

Krownlab, Inc.
2351 NW York St.
Portland, OR 97210
503-292-6998
www.krownlab.com
support@krownlab.com

KROWNLAB
PDX - ORE



Product Features & Technical Specifications

- Industry leading 10 year warranty
- ADA compliant pull force at full system loading
- Supports panels weighing up to 400 lbs in all configurations
- Tru-Leveling System™ for faster, perfect installations
 - Built-in 1/4" adjustment in all directions at each track mounting point
- Adjust wall-to-track distance from 1/4" to 1"
 - Shim kits available for further adjustment and uneven walls
- Vertical panel adjustment
 - Adjust panel up to 1/4" even after installation
- Fully adjustable door stops
 - Allows for fast and easy control of door travel during installation and after
- Available in Brushed Stainless and Black Stainless finishes
- Compatible with framed walls, concrete walls, metal beams, and glass walls
 - Perpendicular wall fitting accessory available
- Track available up to 13 ft in length:
 - Precut to length in 1 ft increments, undrilled
 - Precut to length in 1 ft increments, predrilled with standard hole pattern
 - Made-to-measure, cut and drilled to your specifications
- Seamlessly connect multiple tracks with track connector
- Easily cut and drill track in the field with commonly available tools
- For door panels 3/8" to 3/4" in thickness
- Comprehensive line of system add-ons at www.krownlab.com
- Full CAD available at www.krownlab.com/downloads

