

OPTIONAL STEP - UNDRILLED TRACK (GLASS WALL)

① If you ordered an undrilled track, determine the mounting point spacing of your glass wall.

❗ Connecting multiple tracks requires a special hole pattern at track joints. Details to follow in the "link multiple tracks" step.

② If you want to cut the excess length off your track, determine the desired open and closed positions of the door panel (consider door pulls and overlap region for the door guide). Calculate the System Width using this simple formula below:

$$\text{SYSTEM WIDTH} = (\text{DOOR WIDTH} \times 2) - \text{TRAVEL OVERLAP}$$

③ If you are not cutting off excess track, the track will still need to be trim-cut on both ends for optimal alignment and assembly, and to minimize visible joints.

④ Before cutting the track,

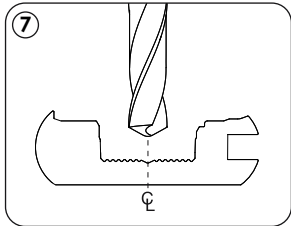
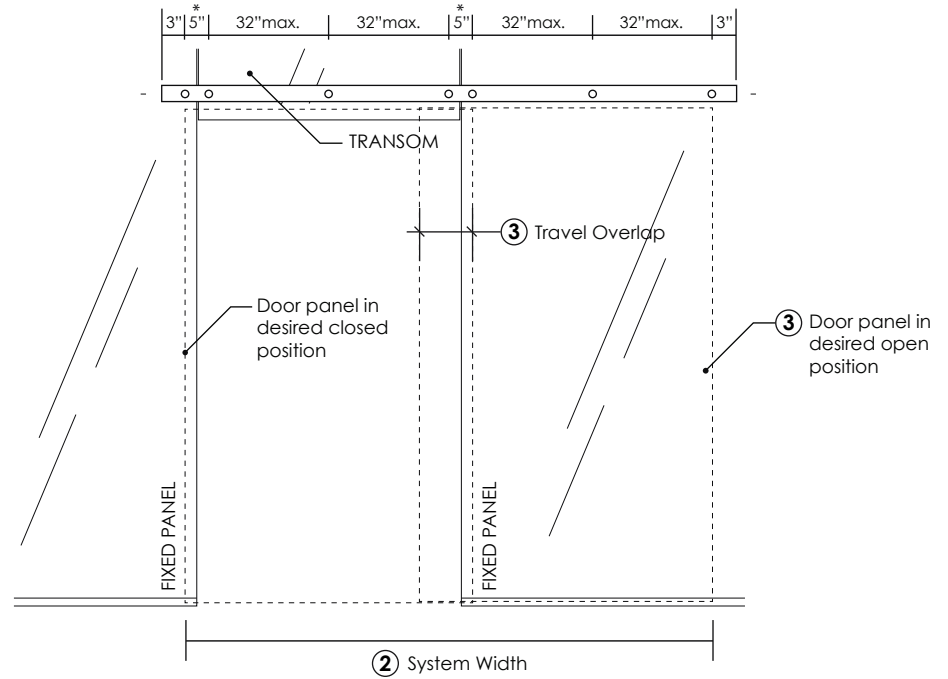
- Ensure springs are clear of cut zones and end caps and loose nuts are removed.
- Align track base and cover flush on one end.
- Tightly wrap the assembly with a short strip of painters tape to prevent sliding.

⑤ Trim-cut one end of the prepped track assembly for optimal alignment.

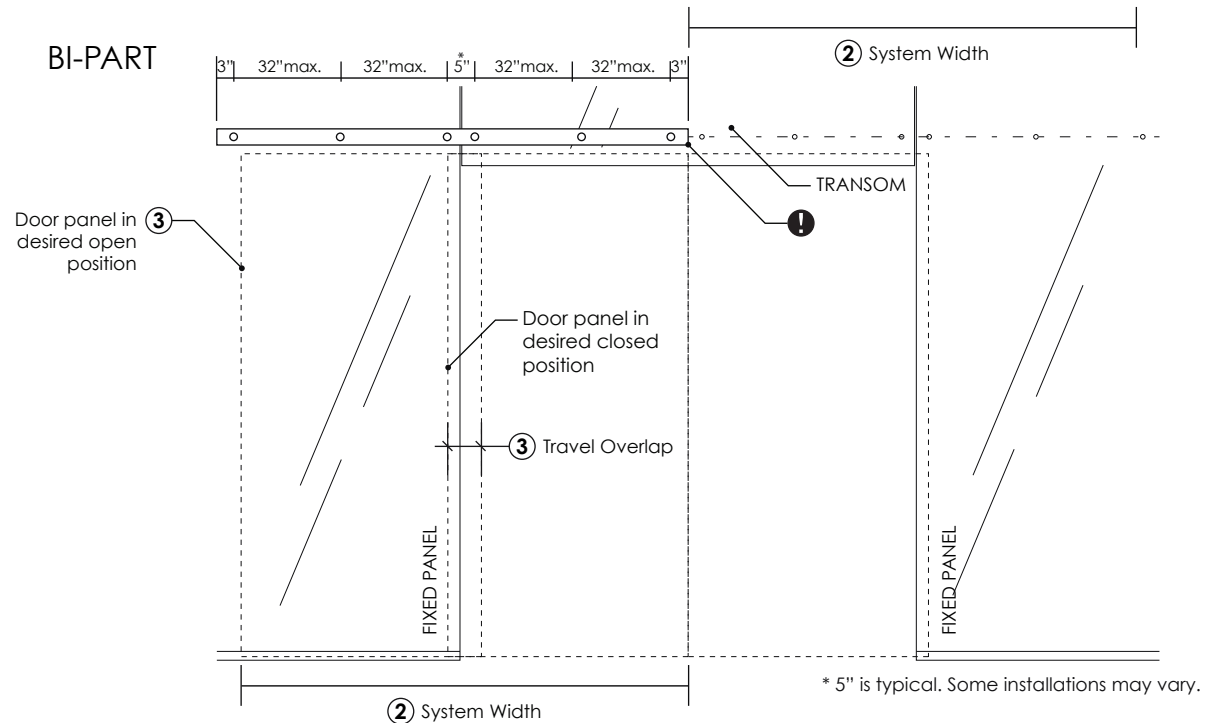
⑥ Either trim-cut the other end, or cut to the calculated system width.

⑦ Using the appropriate drill pattern rules on the right, mark and drill corresponding 1/2" to 11/16" holes along the centerline of the track as shown. (11/16" holes provide full 1/4" adjustment in any direction.)

SINGLE



BI-PART



* 5" is typical. Some installations may vary.