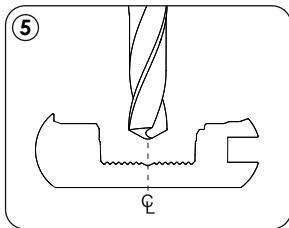
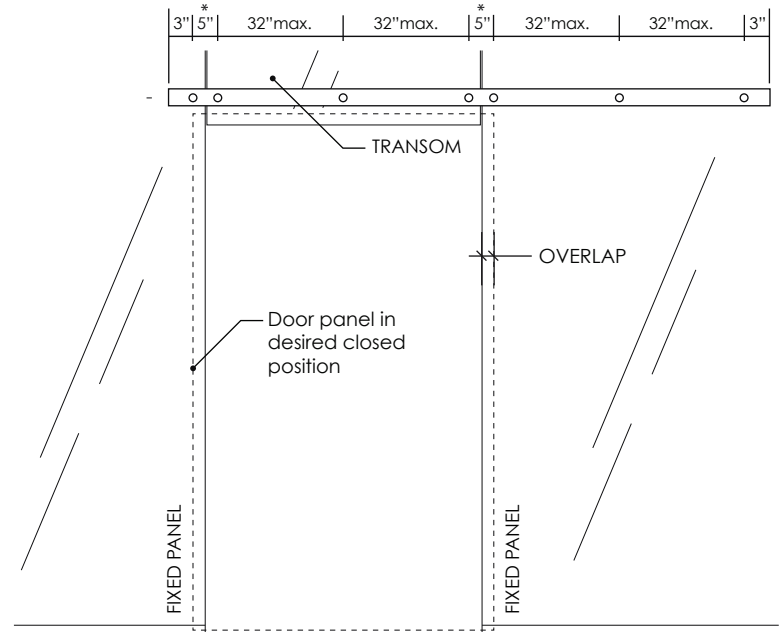


## OPTIONAL STEP - UNDRILLED TRACK (GLASS WALL)

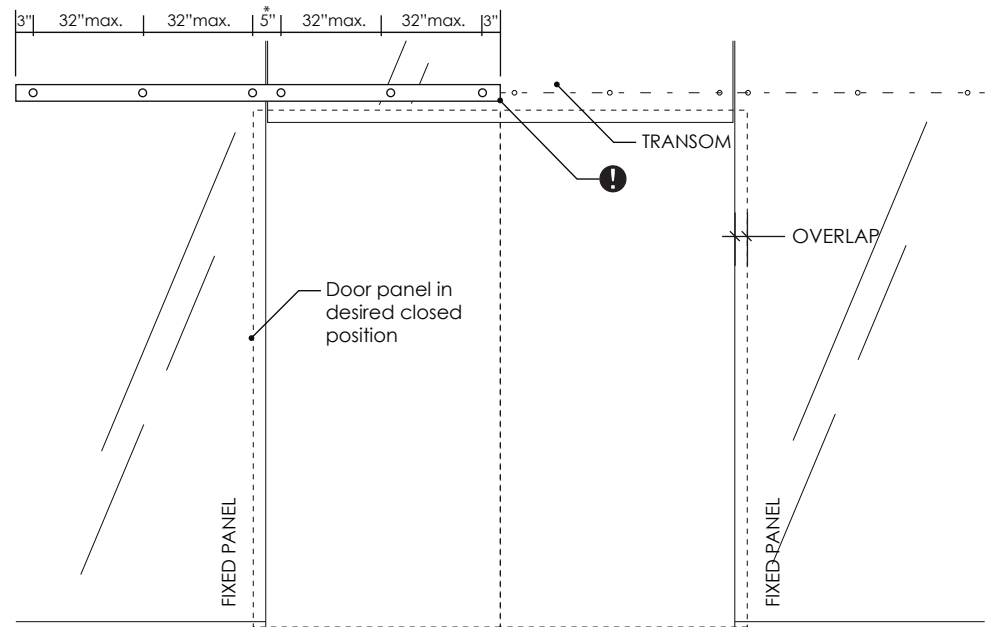
- ① If you ordered an undrilled track, determine the mounting point spacing of your glass wall.
- ❗ Connecting multiple tracks requires a special hole pattern at track joints. Details to follow in the "link multiple tracks" step.
- ② If you are cutting your track to length, determine the desired track length:  $\text{LENGTH} = (\text{DOOR WIDTH} \times 2) - \text{OVERLAP}$   
Otherwise, trim cut the ends following the steps below.
- ③ Before cutting the track,
  - Ensure springs are clear of cut zones and end caps and loose nuts are removed.
  - Align track base and cover flush on one end.
  - Tightly wrap the assembly with a short strip of painters tape to prevent sliding.
  - Trim-cut one end for optimal alignment.
- ④ Now cut the track to length.
- ⑤ Then mark and drill corresponding 9/16" holes along the centerline of the track as shown.



### SINGLE



### BI-PART



\* 5" is typical. Some installations may vary.