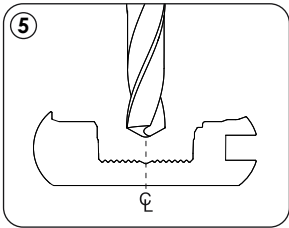
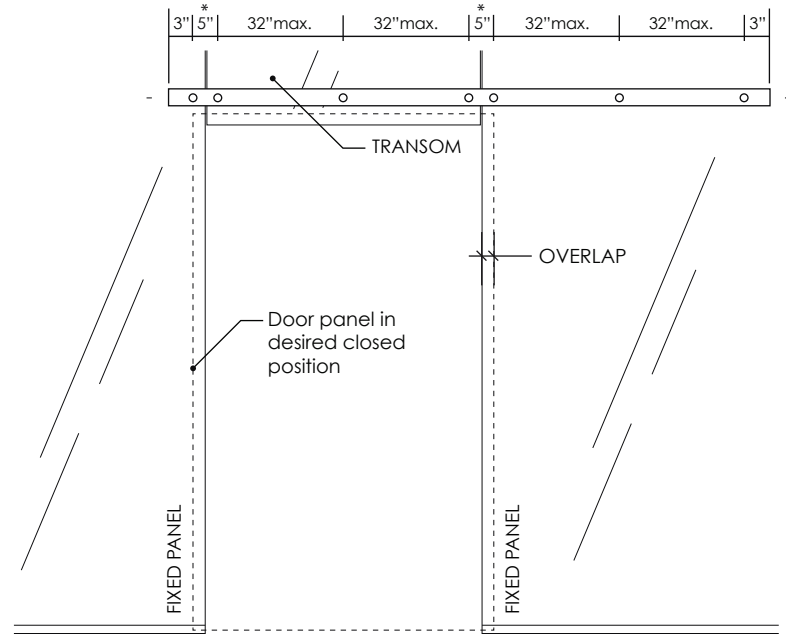


OPTIONAL STEP - UNDRILLED TRACK (GLASS WALL)

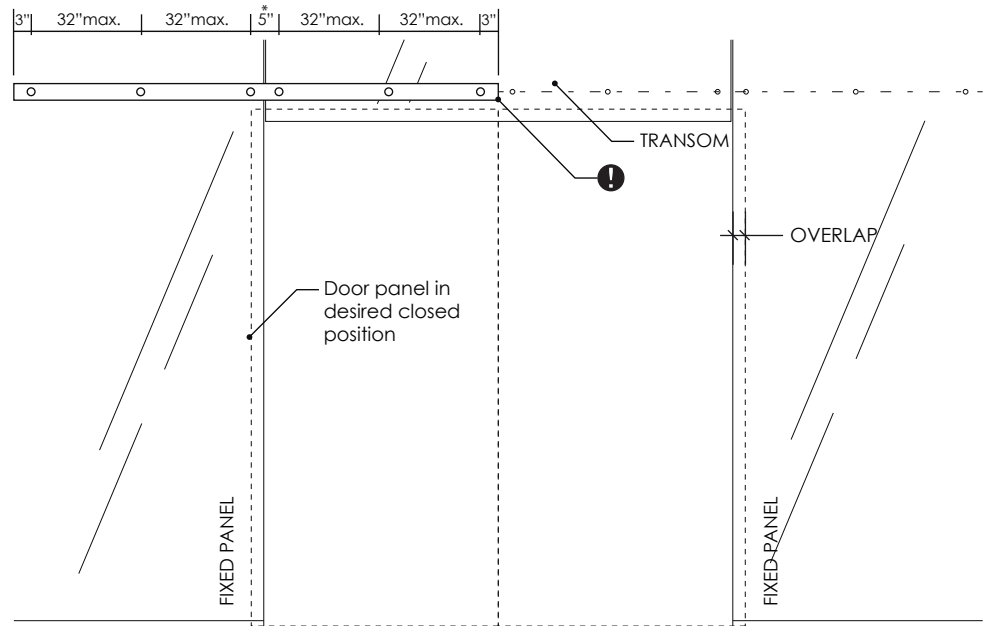
- ① If you ordered an undrilled track, determine the mounting point spacing of your glass wall.
- ❗ Connecting multiple tracks requires a special hole pattern at track joints. Details to follow in the "link multiple tracks" step.
- ② If you are cutting your track, determine the desired track length:
 $LENGTH = (DOOR WIDTH \times 2) - OVERLAP$
- ③ Before cutting the track,
 - Ensure springs are clear of cut zones and end caps and loose nuts are removed.
 - Align track base and cover flush on one end.
 - Tightly wrap the assembly with a short strip of painters tape to prevent sliding.
 - Trim-cut one end for optimal alignment.
- ④ Now cut the track to length.
- ⑤ Then mark and drill corresponding 9/16" holes along the centerline of the track as shown.



SINGLE



BI-PART



* 5" is typical. Some installations may vary.